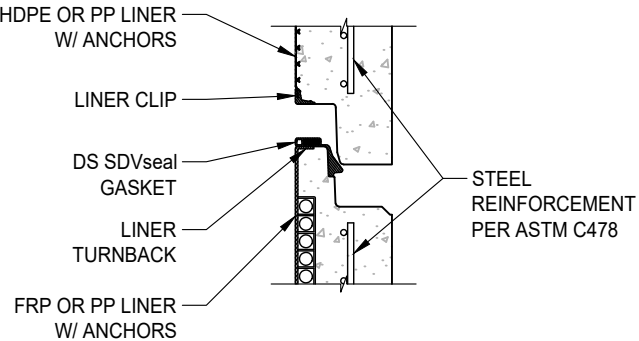
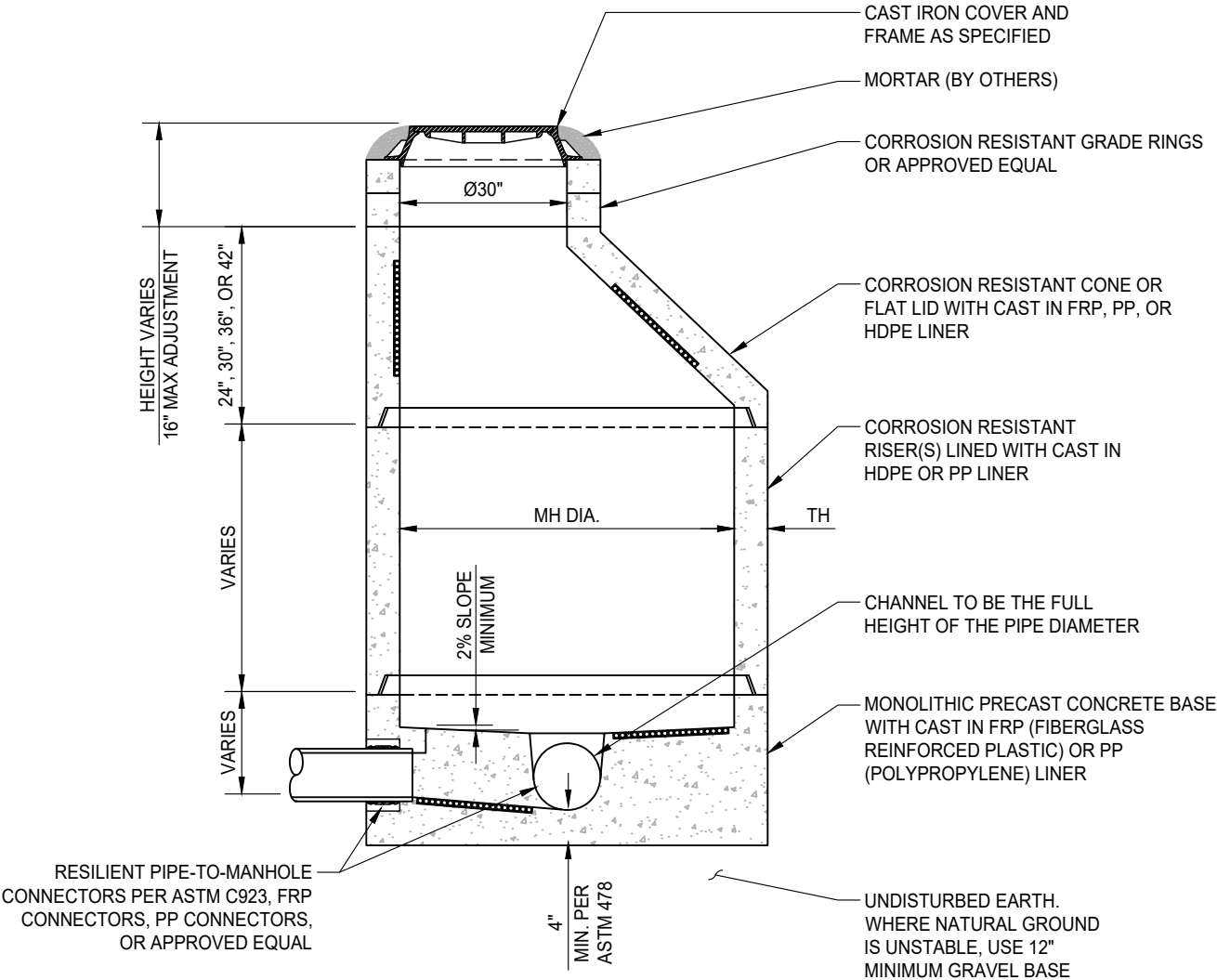


MANHOLE DIA. (MH DIA.)	WALL THICKNESS (TH)	COVER TYPE
Ø48"	5"	CONE OR FLAT LID
Ø60"	6"	CONE OR FLAT LID
Ø72"	7"	FLAT LID ONLY
Ø84"	8"	FLAT LID ONLY
Ø96"	9"	FLAT LID ONLY
FOR LARGER SIZES, PLEASE CONTACT NWPX GENEVA		



STANDARD JOINT DETAIL



SECTION VIEW

- NOTES:

 - MANHOLE TO CONFORM TO ASTM C478 AND C443.
 - MANHOLES DEEPER THAN FIFTEEN FEET (15') SHALL BE A MINIMUM OF FIVE FEET (5') DIAMETER.
 - DROP MANHOLES SHALL BE REQUIRED WHEN THE INFLOW ELEVATION IS MORE THAN TWENTY FOUR INCHES (24") ABOVE THE OUTFALL ELEVATION.
 - IF THE INLET PIPE IS 24" OR LESS ABOVE THE OUTLET PIPE, CONSTRUCT A RAMP FROM THE INLET PIPE TO THE MANHOLE INVERT.
- WHERE UNEQUAL PIPES ENTER A MANHOLE, THE CROWN OF THE PIPES SHALL BE SET AT THE SAME ELEVATION.
 - SET MANHOLE BASE ON 8" OF CLEAN CRUSHED ROCK.
 - PRECAST MANHOLE BASE TO BE CAST MONOLITHICALLY.
 - EXTENDED BASES CAN BE PROVIDED IF FLOATATION CALCULATION INDICATE RISK OF BOUYANCY.
 - ALL MANHOLE SECTIONS SHALL BE CLEARLY MARKED ON THE EXTERIOR AS TO MANUFACTURER AND DATE OF MANUFACTURE PER ASTM C478 AS A MINIMUM REQUIREMENT.
 - HDPE & PP LINER TO BE MINIMUM 2mm THICK.