

A legacy grounded in water





Water & Infrastructure

SOLUTIONS

Applications

Water Transmission
Trenchless
Stormwater
Sanitary Sewer
Wastewater Pretreatment
Water Management

Precast Utilities
Rehabilitation
Industrial
Commercial
Municipal

PRODUCTS

Northwest Pipe Company

Engineered Steel Water Pipe
Spiralweld and Rolled Steel Pipe
Bar-Wrapped Concrete Pipe

Permalok® Corporation

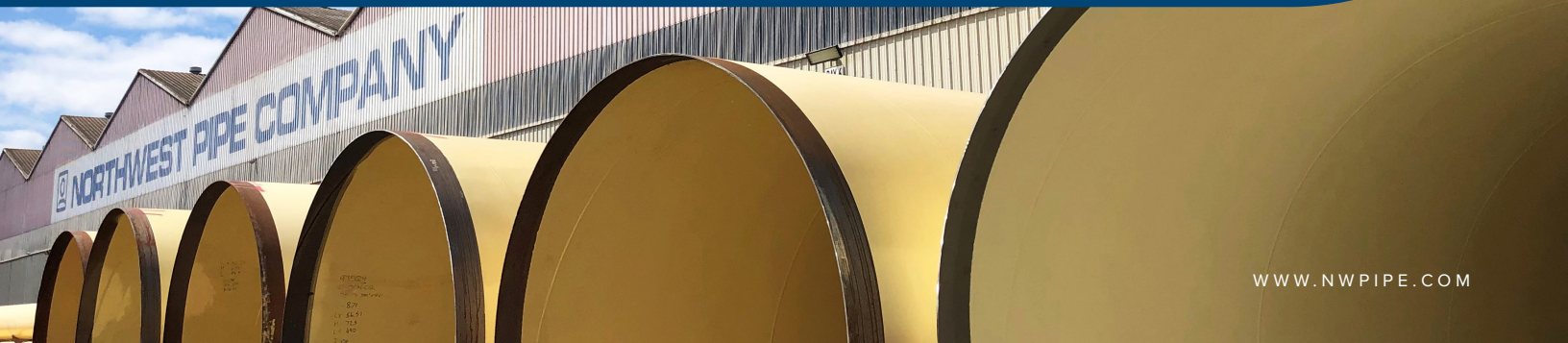
Steel Casing Pipe
Steel Pipe for Curved Microtunneling
Trenchless Steel Carrier Pipe

Geneva Pipe and Precast

Lined Concrete Sanitary Sewer Systems
RCP and Precast Stormwater Products
Precast Infrastructure Components

ParkUSA

Water Management Infrastructure
Wastewater and Stormwater Technologies
Process Systems
Precast Utilities





SPIRALWELD

C200 Engineered Steel Water Transmission Pipe

Manufactured in accordance with AWWA Manual M11, our large-diameter spiralweld steel pipe is available with a variety of coatings, linings, and end configurations to meet the exacting specifications of your project. Whether transporting water for miles or carrying liquids or gases through pipelines at high pressure, our steel water pipe is made to last. It is durable, lightweight, quick to install, and provides exceptional value and low cost of ownership.

Advantages

- Performance-based design
- Engineered specifically for each project
- High-strength steel
- Ductility and reliability under stress
- High carrying capacity
- Long service life
- Bottle-tight joints eliminate water loss
- Easy installation and field adjustments

Coatings

C205 Cement Mortar
C222 Polyurethane
C210 Liquid Epoxy
C214 Tape Coating

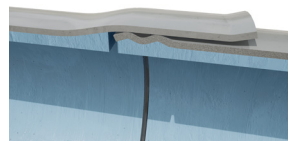
Linings

C205 Cement Mortar
C222 Polyurethane
C210 Liquid Epoxy

Joint Designs

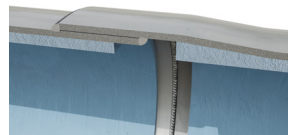
- Unrestrained
- Restrained
- Proprietary

O-Ring Joint ●



Provides an economical, non-welded method for joining steel water pipe without a reduction in the rated working pressure.

Bell-and-Spigot Lap Weld Joint ●



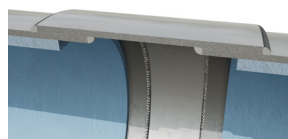
These joints can withstand designed or unexpected surges associated with high-pressure pipelines.

Butt-Weld Joint ●



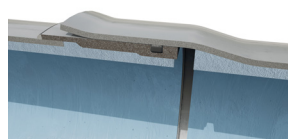
Single-weld circumferential joint that allows up to 5° deflection with a miter cut on one end or 10° deflection joining two mitered ends.

Butt-Strap Joint ●



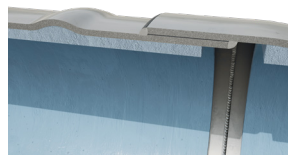
Features a two-piece roll formed strap that joins pipe with two longitudinal welds in addition to a circumferential fillet weld.

Carnegie Joint ●●



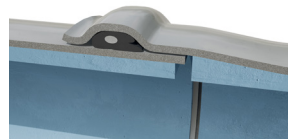
Provides an economical, non-welded method for joining bar-wrapped concrete pressure pipe and steel water pipe.

InfraShield® Seismic Resilient Joint ●●



Builds on the bell-and-spigot lap weld joint by adding a small projection in the pipe wall that protects joints during settlement and geohazards.

Vanderseal Joint ●●



A rubber compression-type joint with greater flexibility that can accommodate deflection in both water and sewage conveyance.

PERMALOK®

Trenchless Steel Casing Pipe with Patented Interlocking Joints

Permalok® Steel Casing Pipe excels in trenchless jacking construction applications including microtunneling and pipe jacking, auger boring, pipe ramming, and others. Our precision-machined joint reduces installation time by eliminating butt-weld joints, resulting in a shortened tunneling duration and reduced field costs.

Efficiency Comparison

60" Permalok® Casing Pipe

A 60" Permalok® connection is made in 6 minutes or less, allowing a crew to install up to 10 pieces of casing 20 feet long in one 8 hour shift.

End Result: Installs 200 linear feet per day

VS.

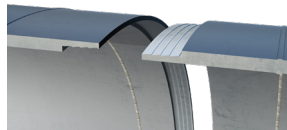
60" Butt Welded Steel Casing Pipe

The best field welders take 180 minutes to fit and butt weld one joint of 60" x .750" casing. At that rate, the same crew can install only 2-3 pieces of casing 20 feet long in an 8 hour shift.

End Result: Installs 40 to 60 linear feet per day

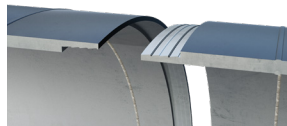
Permalok® Joint Designs

T-5 Joint



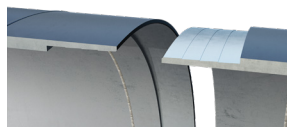
The flagship T-5 joint is used most often and maintains integrity with typical loading conditions for casing pipe.

T-7 Joint



This joint features a precision-machined interference fit similar to the T-5 joint, but incorporates two rubber O-Ring gaskets.

AB Joint



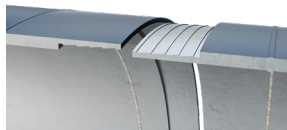
The AB joint requires lower connection forces, mitigating the challenges associated with auger bore installation.

PR Joint



Designed specifically for pipe ramming, this joint reduces energy transfer loss resulting in longer drives without welding.

HDD Joint



The HDD profile incorporates an additional locking key on the male end to increase pull-apart resistance while requiring less force to join.

Radial Bending Joint

Steel Pipe for Microtunneling Along a Curved Radius

The patent-pending RBJ provides the reliability and speed of our other Permalok® joint designs, with the added flexibility of installing along a curve. This improvement creates more opportunities for maneuverability in congested tunnel alignments, allowing the pipe path to bend in any direction around utility lines, monuments, and building foundations.



PRECAST

Reinforced Concrete Pipe, Concrete Jacking Pipe, Lined Pipe, and Manholes

Reinforced Concrete Pipe (RCP) marries the best features of concrete and steel, with the concrete pipe resisting compressive forces while the steel cage provides tensile strength. RCP has a proven long service life and offers resiliency and sustainability that make it an ideal choice for sanitary sewer and storm drainage systems.

Advantages

- 100-year design life
- Open-cut or trenchless installation
- Use as casing or carrier pipe
- Sustainable material
- Adaptable design
- Robust structure to meet high loads
- High quality control



Perfect Lined Pipe & Manholes

Perfect lined RCP and precast manholes offer a corrosion-free solution that provides longevity to sanitary sewer systems. The weldless joint design reduces installation time and costs.



Concrete Jacking Pipe

Available in sizes 36" through 96," our trenchless RCP is designed to withstand the compressive forces of pipe jacking.

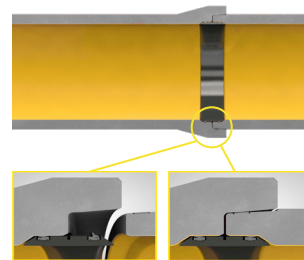


RCP

We manufacture RCP in sizes 12" through 96" in a variety of strength classes. This durable, easy-to-install pipe is an excellent choice for both shallow and deep projects.



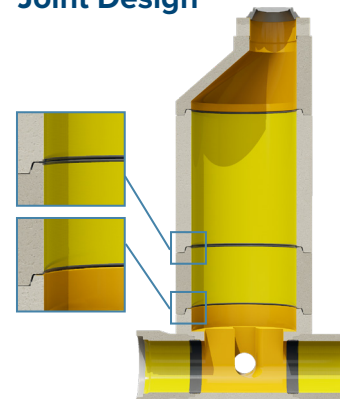
Perfect Pipe Joint Design



Weld-Free Internal Coupler

Integrated internal coupler eliminates the need for field welding in most diameters. Dual-tilting edge gaskets seal against recessed HDPE liner, providing a corrosion-resistant system.

Lined Manhole Joint Design



Watertight Connections

Rubber gaskets provide a watertight seal between sections with no field welding required. Additional protection is provided by a liner rubber clip that seals the interface between the liner and concrete, protecting concrete from the corrosive environment.

LOCATIONS

Corporate Headquarters

Vancouver, WA

Manufacturing Facilities

Portland, OR
Tracy, CA
Adelanto, CA
Saginaw, TX
Parkersburg, WV
SLRC, Mexico
St. Louis, MO
Salt Lake City, UT
Orem, UT
St. George, UT
Houston, TX
San Antonio, TX
Ferris, TX

Spiralweld C200 Pipe
Permalok® Steel Casing Pipe
Concrete Jacking Pipe
Precast Infrastructure



CONTACT US

Email

info@nwpipe.com

Visit

www.nwpipe.com