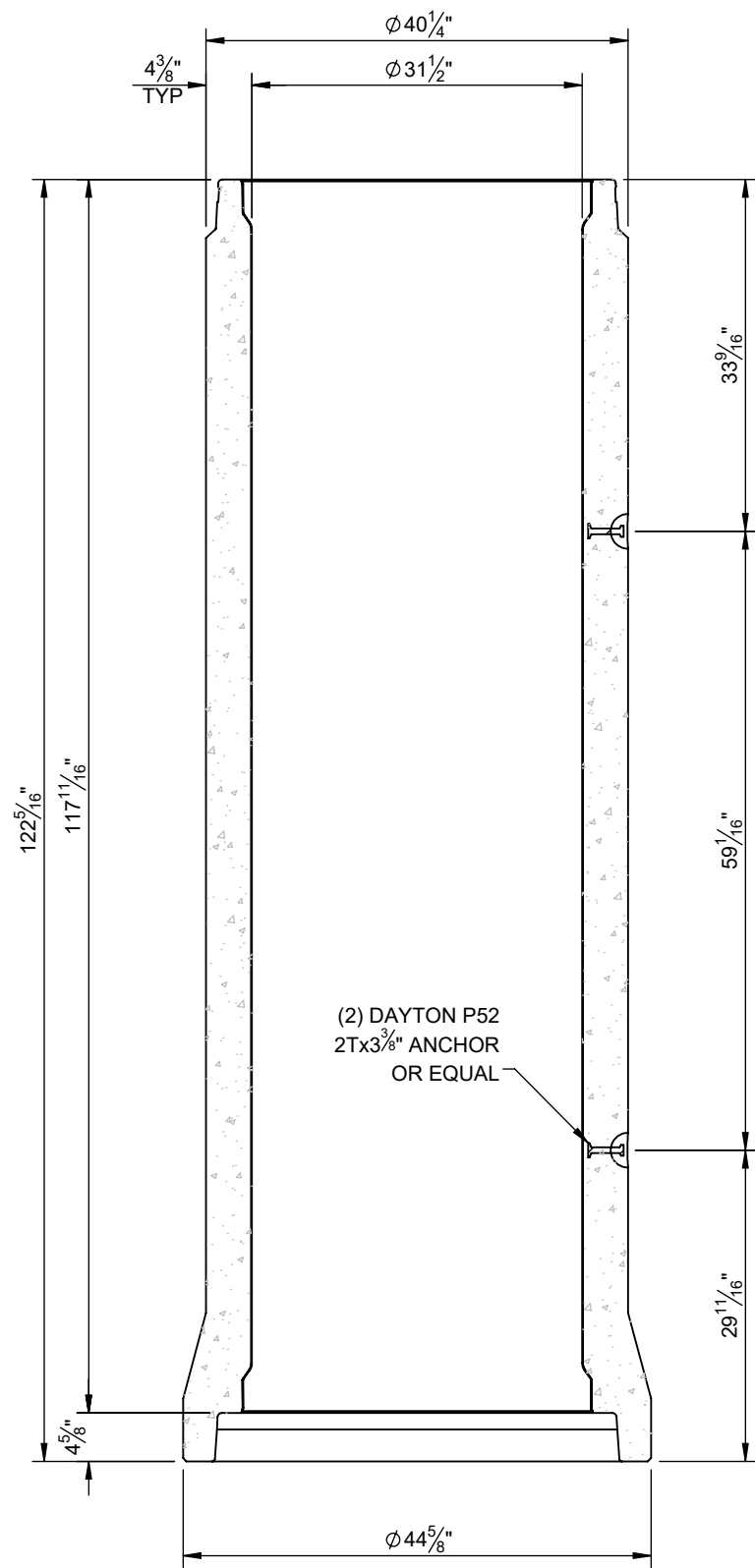
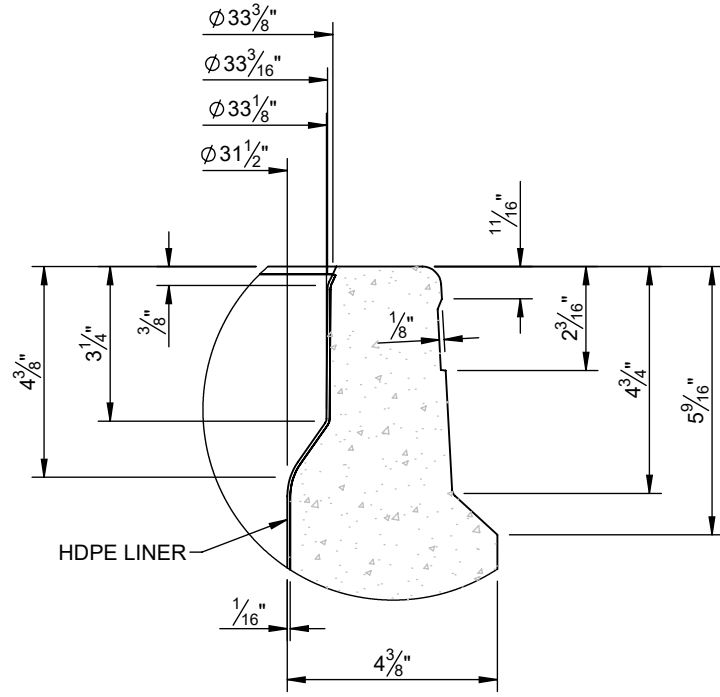


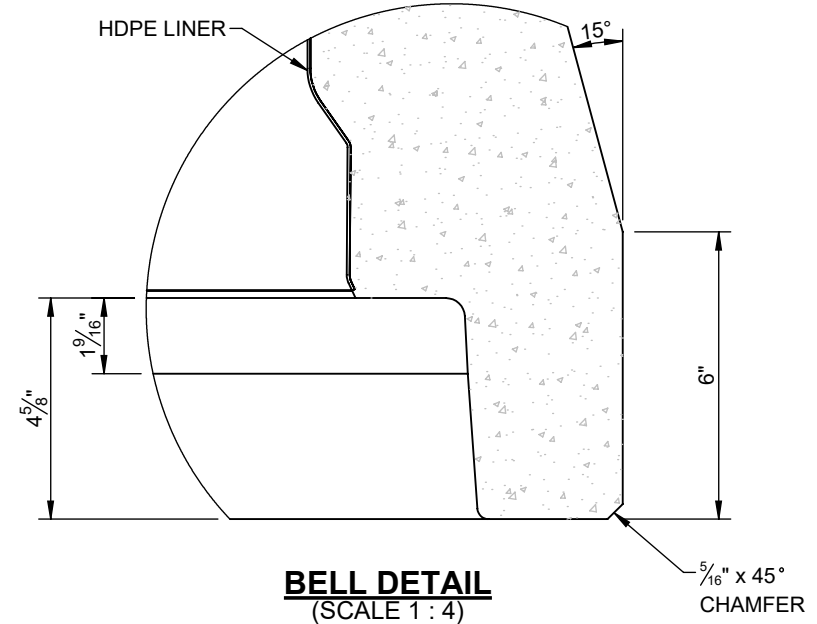
G:\My Drive\GP Engineering\SolidWorks\Perfect Products\Pipe\Standard Pipe\30" Standard Pipe.SLDDRW



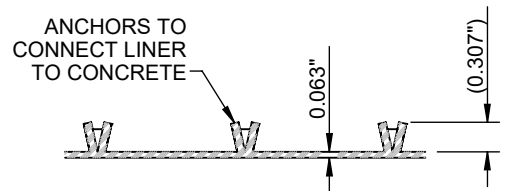
SECTION VIEW



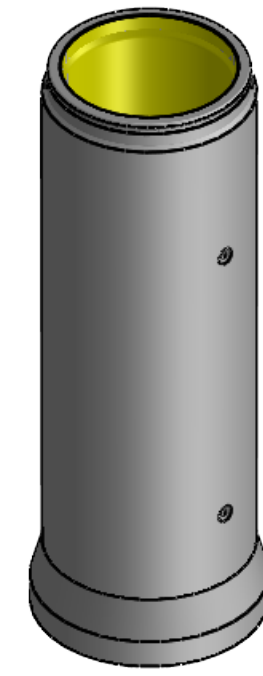
SPIGOT DETAIL
(SCALE 1 : 4)



BELL DETAIL
(SCALE 1 : 4)



HDPE LINER DETAIL WITH ANCHORS



ISOMETRIC VIEW
(SCALE 1 : 36)

REQUIRED REINFORCING PER FOOT LENGTH OF PIPE		
CLASS III (4,000 psi)	CLASS IV (4,000 psi)	CLASS V (6,000 psi)
0.10 in ² (SINGLE)	0.11 in ² (INNER) 0.07 in ² (OUTER)	0.23 in ² (INNER) 0.14 in ² (OUTER)

TOLERANCES FOR REINFORCING:

- SINGLE CAGE: CAGE MUST BE IN CENTER 1/3 OF WALL
 - MINIMUM CLEARANCE FROM INSIDE = 1 1/2"
 - MAXIMUM CLEARANCE FROM INSIDE = 2 1/2"
- DOUBLE CAGE: INNER CAGE MUST BE IN INNER 1/3 OF WALL AND OUTER CAGE MUST BE IN OUTER 1/3 OF WALL
 - MINIMUM CLEARANCE = 1"
 - MAXIMUM CLEARANCE = 1 1/4"

LIFTING NOTES:

- WEIGHT = **5,190 LBS**
- DO NOT LIFT UNTIL CONCRETE STRENGTH REACHES **2,500 PSI**
- LIFT WITH MINIMUM SLING LENGTHS OF **6' LONG**



PROPRIETARY AND CONFIDENTIAL
THE INFORMATION CONTAINED IN THIS DRAWING IS THE SOLE PROPERTY OF GENEVA PIPE & PRECAST. ANY REPRODUCTION IN PART OR AS A WHOLE WITHOUT THE WRITTEN CONSENT OF GENEVA PIPE & PRECAST IS PROHIBITED.

ALL DIMENSIONS ARE ROUNDED TO NEAREST 1/4" U.O.N.

PRODUCT: 30" STANDARD PERFECT PIPE (800mm)		
DRAWN BY: DMANNING	DATE: 8/12/2020	LOADING:
CHECKED BY:	SCALE: 1:18	SHEET SIZE: B
LOCATIONS: OREM, SALT LAKE CITY, ST. GEORGE		SHEET: 1 of 1