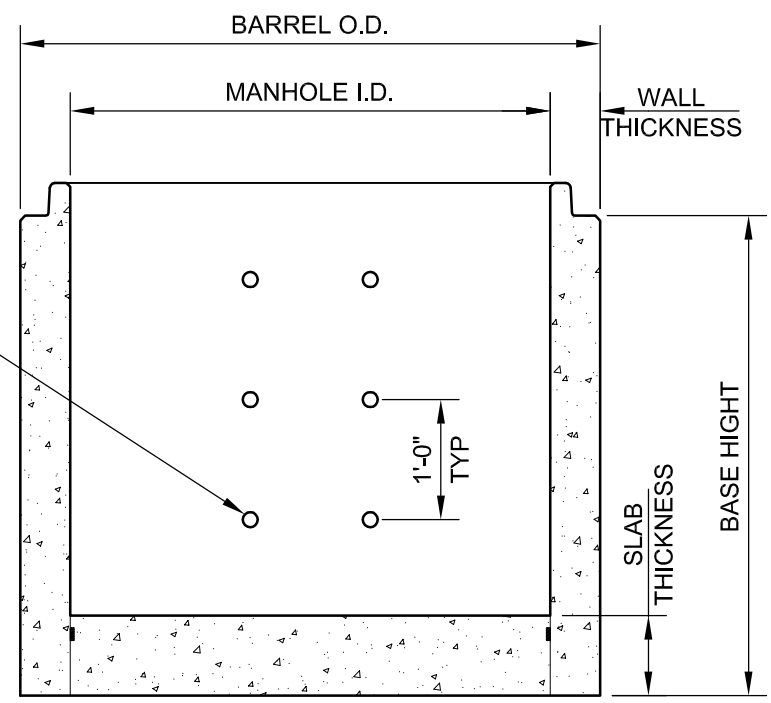


**ISOMETRIC VIEW**




**SECTION VIEW**

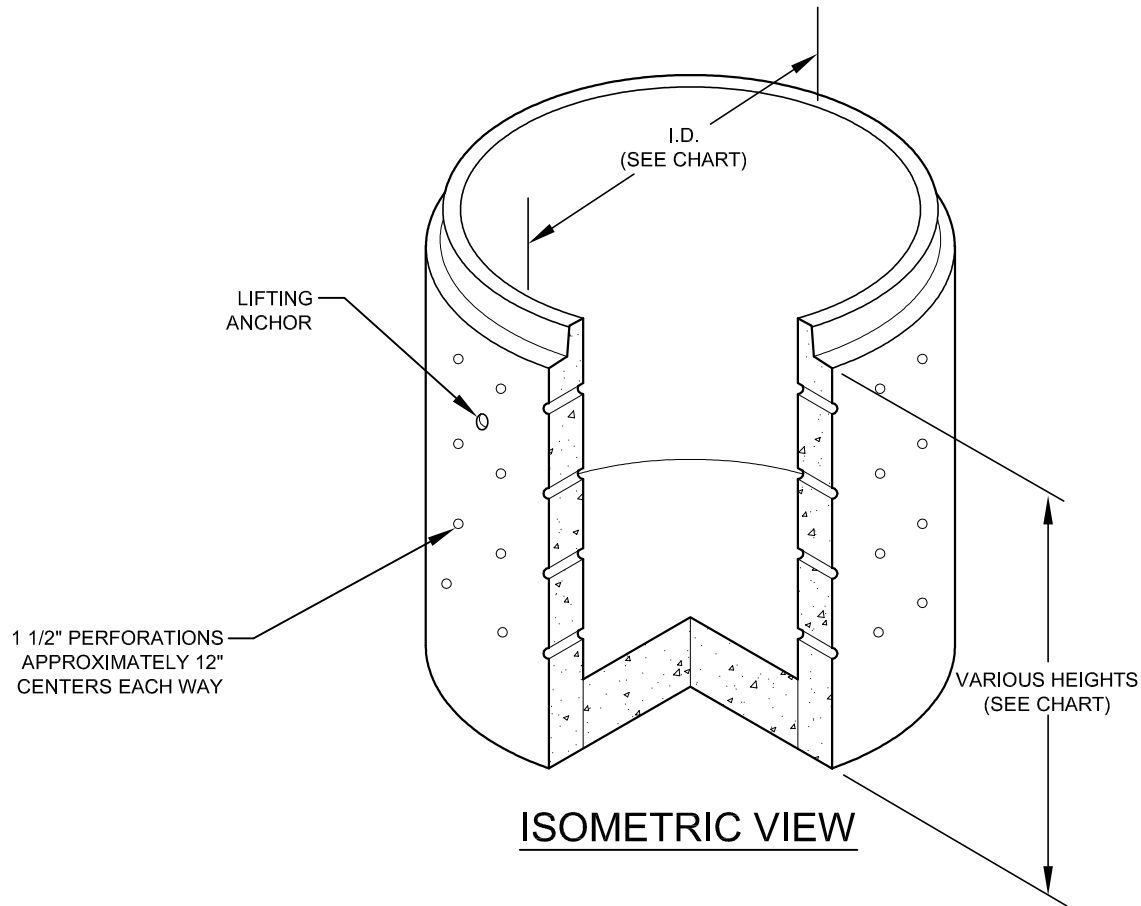
\* TYPICALLY TWO LIFTING ANCHORS ARE PROVIDED FOR EACH RISER BASE  
 LIFTING ANCHORS FOR 48" - 60" MANHOLES ARE PLASTIC INSERTS  
 LIFTING ANCHORS FOR ALL OTHER MANHOLES ARE CONAC DR 8 TON ANCHORS

**NOTES:**

1. DESIGNED TO MEET HL-93 LIVE LOAD.
2. CONFORMS TO CURRENT ASTM C478 REQUIREMENTS.
3. MINIMUM CONCRETE STRENGTH IS 4,000 PSI.
4. 1/2" PERFORATIONS AVAILABLE SPACED AT APPROX 12" O.C. EACH WAY FOR SUMPS.
5. MANHOLE BASE IS NOT MONOLITHIC. SLAB IS POURED AFTER WALLS.

FLAT FLOOR MANHOLE BASE SPECIFICATIONS						
MANHOLE I.D.	WALL THICKNESS	BARREL O.D.	SLAB THICKNESS	AVAILABLE HEIGHTS	WEIGHT	
					SLAB	WALL
48"	5"	58"	7"	1', 2', 3', 4'	1,100 lb	850 lb/ft
60"	6"	72"	8"	1', 2', 3', 4', 5', 6', 7'	1,965 lb	1,275 lb/ft
72"	7"	86"	8"	1', 2', 3', 4', 5', 6', 7'	2,830 lb	1,810 lb/ft
84"	8"	100"	9"	1', 2', 3', 4', 5', 6', 7', 8'	3,370 lb	2,408 lb/ft
96"	9"	114"	10"	2', 3', 4', 5', 6', 7', 8'	4,400 lb	3,186 lb/ft
108"	10"	128"	12"	2', 3', 4', 5', 6', 7'	9,600 lb	3,800 lb/ft
120"	11"	142"	12"	2', 3', 4', 5', 6', 7'	11,800 lb	4,725 lb/ft
144"	12"	168"	14"	2', 3', 3'-10"	19,800 lb	6,150 lb/ft

 <b>GENEVA PIPE</b> <small>Concrete products. concrete reliability</small>	SHEET: <b>FLAT FLOOR MANHOLE BASES</b>		
	SCALE: N.T.S.	DRAWN: RMP	
PROJECT:	DATE: 3-1-2013	PROJECT #:	
<b>STANDARD DRAWING</b>			
LOCATION:	SALT LAKE - OREM - ST. GEORGE	1 of 1	




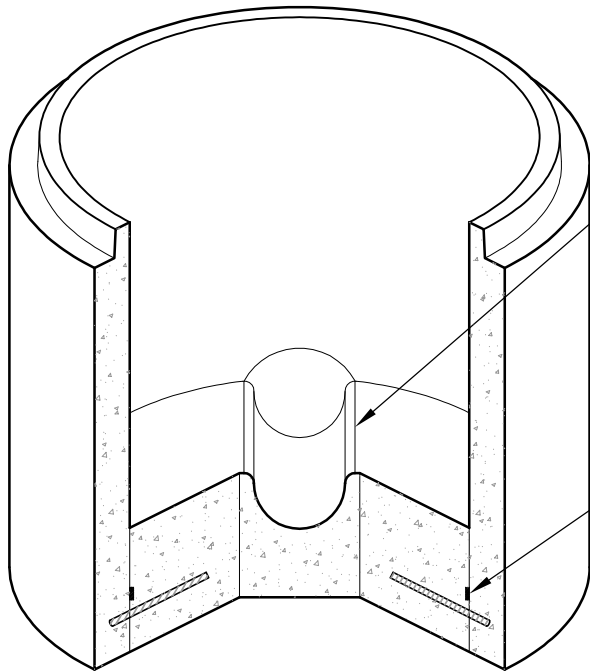
**NOTES:**

1. CONFORMS TO CURRENT ASTM C478 REQUIREMENTS.
2. MANUFACTURED USING TYPE III/V CEMENT WHICH MEETS THE REQUIREMENTS FOR BOTH TYPE III AND TYPE V CEMENT.

FLAT FLOOR MANHOLE BASE SPECIFICATIONS						
MANHOLE I.D.	WALL THICKNESS	BARREL O.D.	SLAB THICKNESS	AVAILABLE HEIGHTS	WEIGHT	
					SLAB	WALL
48"	5"	58"	7"	1', 2', 3', 4'	1,100 lb	850 lb/ft
60"	6"	72"	8"	1', 2', 3', 4', 5', 6', 7'	1,965 lb	1,275 lb/ft
72"	7"	86"	8"	1', 2', 3', 4', 5', 6', 7'	2,830 lb	1,810 lb/ft

\* TYPICALLY TWO LIFTING ANCHORS ARE PROVIDED FOR EACH RISER BASE  
 LIFTING ANCHORS FOR 48" - 60" MANHOLES ARE PLASTIC INSERTS  
 LIFTING ANCHORS FOR 72" MANHOLES ARE CONAC DR 8 TON ANCHORS

 <b>GENEVA PIPE</b> <small>Concrete products. concrete reliability</small>	SHEET: PERFORATED MANHOLE BASE		
	SCALE: N.T.S.	DRAWN: RMP	
	DATE: 6-28-2012	PROJECT #:	-
PROJECT: <b>STANDARD DRAWING</b>			
LOCATION: SALT LAKE - OREM - ST. GEORGE			Sheet 1 of 2

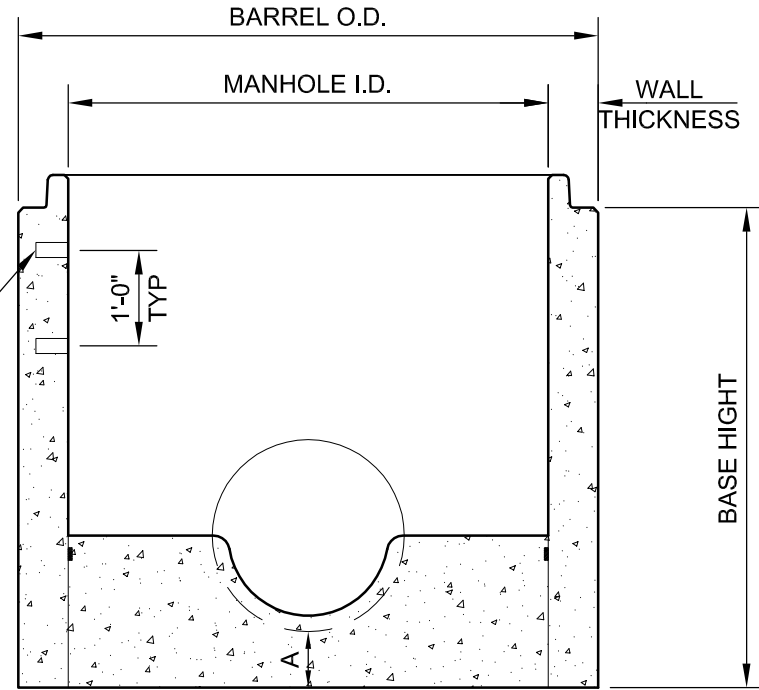


**ISOMETRIC VIEW**

TROUGHING  
VARIES PER  
MANHOLE

STEP HOLES

INDUSTRIAL GRADE  
SILICONE SEALANT



**SECTION VIEW**


- \* TYPICALLY TWO LIFTING ANCHORS ARE PROVIDED FOR EACH RISER BASE
- LIFTING ANCHORS FOR 48" - 60" MANHOLES ARE PLASTIC INSERTS
- LIFTING ANCHORS FOR ALL OTHER MANHOLES ARE CONAC DR 8 TON ANCHORS

**NOTES:**

1. DESIGNED TO MEET HL-93 LIVE LOAD.
2. CONFORMS TO CURRENT ASTM C478 REQUIREMENTS.
3. MINIMUM CONCRETE STRENGTH IS 4,000 PSI.
4. MANHOLE BASE IS NOT MONOLITHIC. SLAB IS Poured AFTER WALLS.

**SHAPED FLOOR MANHOLE BASE SPECIFICATIONS**

MANHOLE I.D.	WALL THICKNESS	BARREL O.D.	A DIM.	BASE HEIGHT & WEIGHT						
				2'	3'	4'	5'	6'	7'	8'
48"	5"	58"	7"	3,650 lb	4,350 lb	6,500 lb				
60"	6"	72"	8"	6,680 lb	7,930 lb	9,500 lb	10,690 lb	12,070 lb	13,450 lb	
72"	7"	86"	8"		15,250 lb	17,000 lb	18,750 lb	20,350 lb	21,950 lb	
84"	8"	100"	9"		19,250 lb	21,750 lb	26,000 lb	29,500 lb	32,100 lb	34,700 lb
96"	9"	114"	10"		24,600 lb	27,800 lb	32,900 lb	36,100 lb	40,000 lb	43,200 lb
108"	10"	128"	12"		28,600 lb	31,800 lb	35,000 lb	39,000 lb	44,000 lb	
120"	11"	142"	12"		38,000 lb	45,000 lb	52,000 lb	59,000 lb	66,000 lb	73,000 lb
144"	12"	168"	14"	144" MANHOLE BASE IS ONLY AVAILABLE WITH A FLAT FLOOR						

 <b>GENEVA PIPE</b> <small>Concrete products. concrete reliability</small>	SHEET: SHAPED FLOOR MANHOLE BASES	
	SCALE: N.T.S.	DRAWN: RMP
PROJECT:	DATE: 3-1-2013	PROJECT #:
<b>STANDARD DRAWING</b>		
LOCATION:	SALT LAKE - OREM - ST. GEORGE	1 of 1