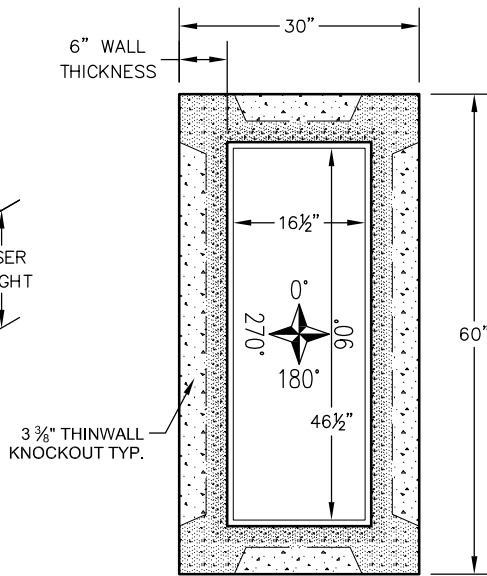
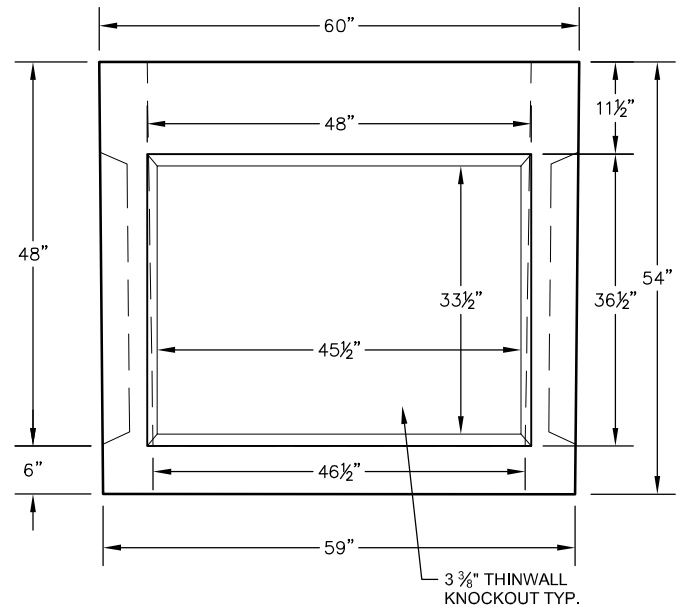


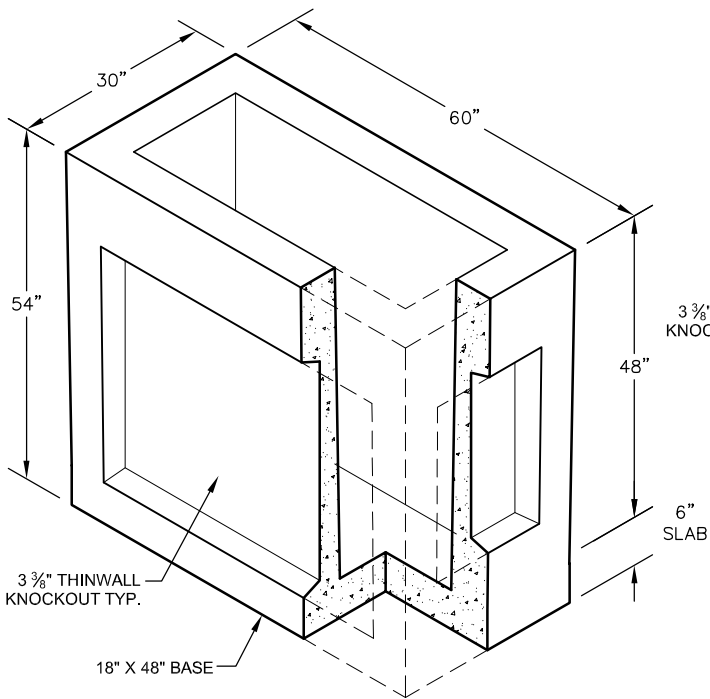
RISER ISOMETRIC VIEW



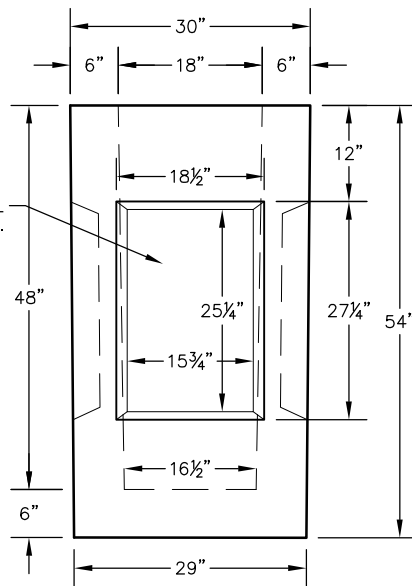
PLAN VIEW



90° & 270° ELEVATION



BASE ISOMETRIC VIEW




0° & 180° ELEVATION

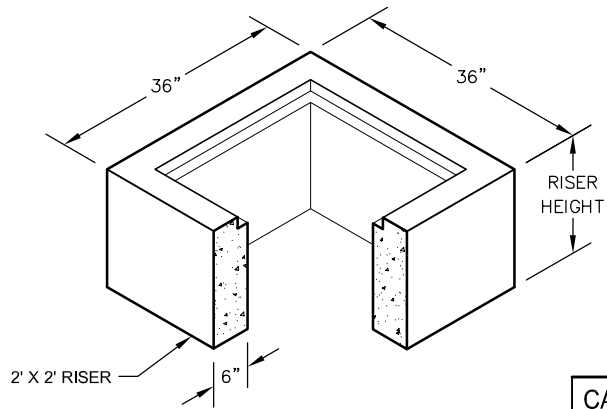
CATCH BASIN SPECIFICATIONS			
RISER HEIGHT AND WEIGHT			
6"	12"	18"	24"
490 lb	980 lb	1,475 lb	1,950 lb

* CUSTOM RISER HEIGHTS AVAILABLE UPON REQUEST

NOTES:

1. BOX WEIGHT = 4,200 LBS
2. VAULT DESIGNED TO MEET ASTM C-858 & C-913.
3. LIFTING ANCHOR TYPE AND PLACEMENT AS REQUIRED.

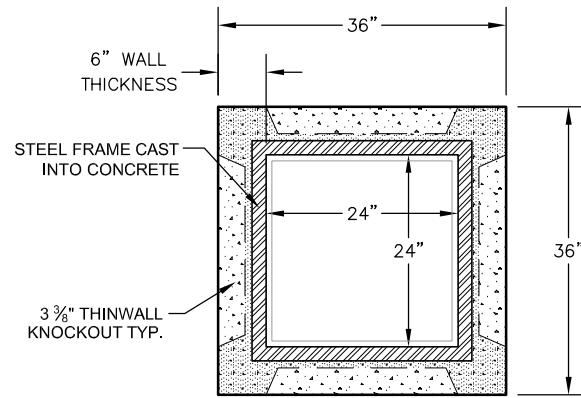
 GENEVA PIPE <small>Concrete products. concrete reliability.</small>	SHEET: 1.5' x 4' x 4' CATCH BASIN		
	SCALE: N.T.S	DRAWN: RMP	
PROJECT:	DATE: 1-24-2013	TITAN #:	-
STANDARD DRAWING			
LOCATION: SALT LAKE - OREM - ST. GEORGE			Sheet 1



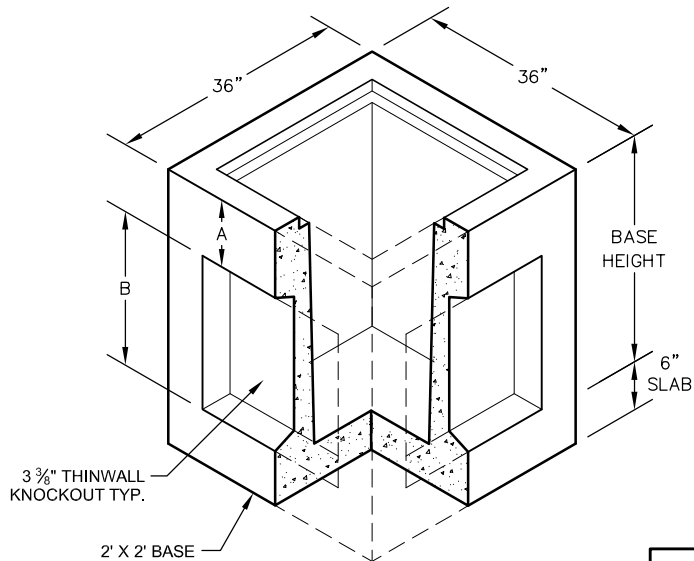
RISER ISOMETRIC VIEW

CATCH BASIN SPECIFICATIONS			
RISER HEIGHT AND WEIGHT			
6"	12"	18"	24"
450 lb	900 lb	1,350 lb	1,500 lb

* CUSTOM RISER HEIGHTS AVAILABLE UPON REQUEST

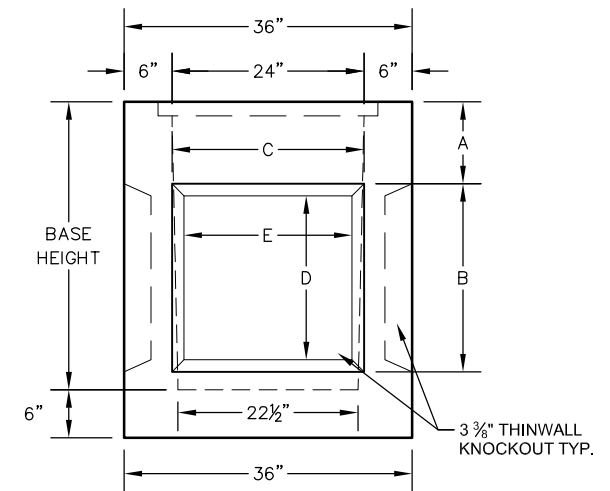


TOP VIEW



BASE ISOMETRIC VIEW


CATCH BASIN SPECIFICATIONS						
BASE HEIGHT	A	B	C	D	E	WEIGHT
3'	10 1/4"	23 1/2"	24"	20 1/2"	21"	2,400 lb
4'	10 3/8"	35 3/8"	23 3/4"	32 5/8"	21"	3,100 lb

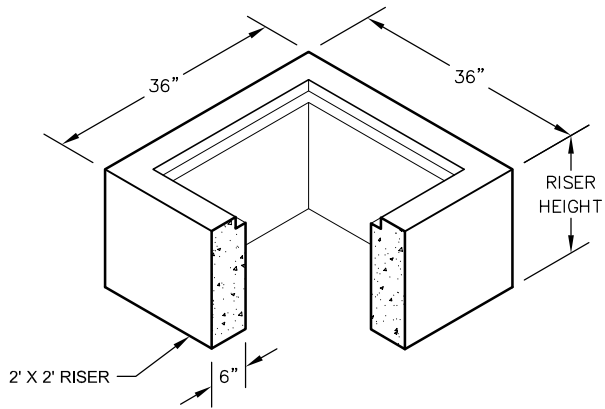


BASE ELEVATION

NOTES:

1. VAULT DESIGNED TO MEET ASTM C-858 & C-913.
2. LIFTING ANCHOR TYPE AND PLACEMENT AS REQUIRED.

 GENEVA PIPE <small>Concrete products. concrete reliability.</small>	SHEET: 2' x 2' CATCH BASIN		
	SCALE: N.T.S.	DRAWN: RMP	
PROJECT:	DATE: 1-24-2013	TITAN #:	-
STANDARD DRAWING			
LOCATION: SALT LAKE - OREM - ST. GEORGE	Sheet 1		

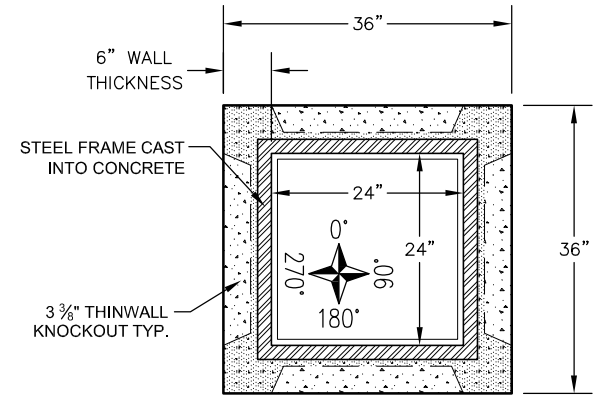


RISER ISOMETRIC VIEW

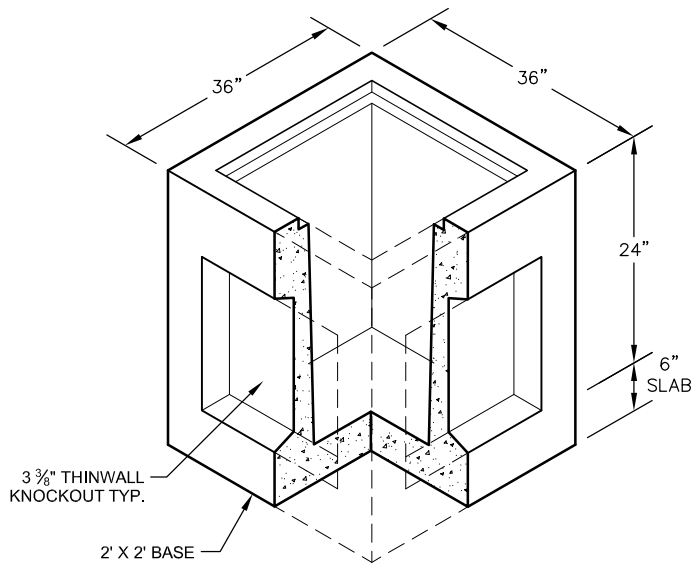
CATCH BASIN SPECIFICATIONS

RISER HEIGHT AND WEIGHT			
6"	12"	18"	24"
450 lb	900 lb	1,350 lb	1,500 lb

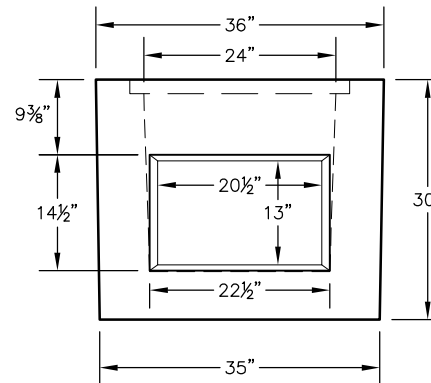
* CUSTOM RISER HEIGHTS AVAILABLE UPON REQUEST



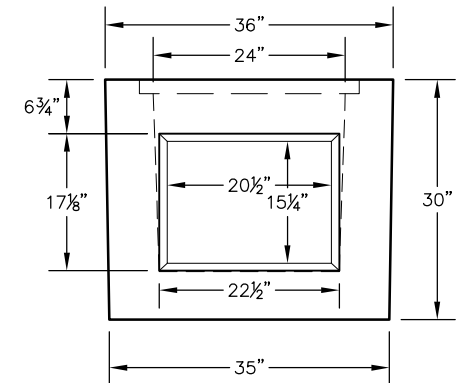
TOP VIEW



BASE ISOMETRIC VIEW




90° & 270° ELEVATION



0° & 180° ELEVATION

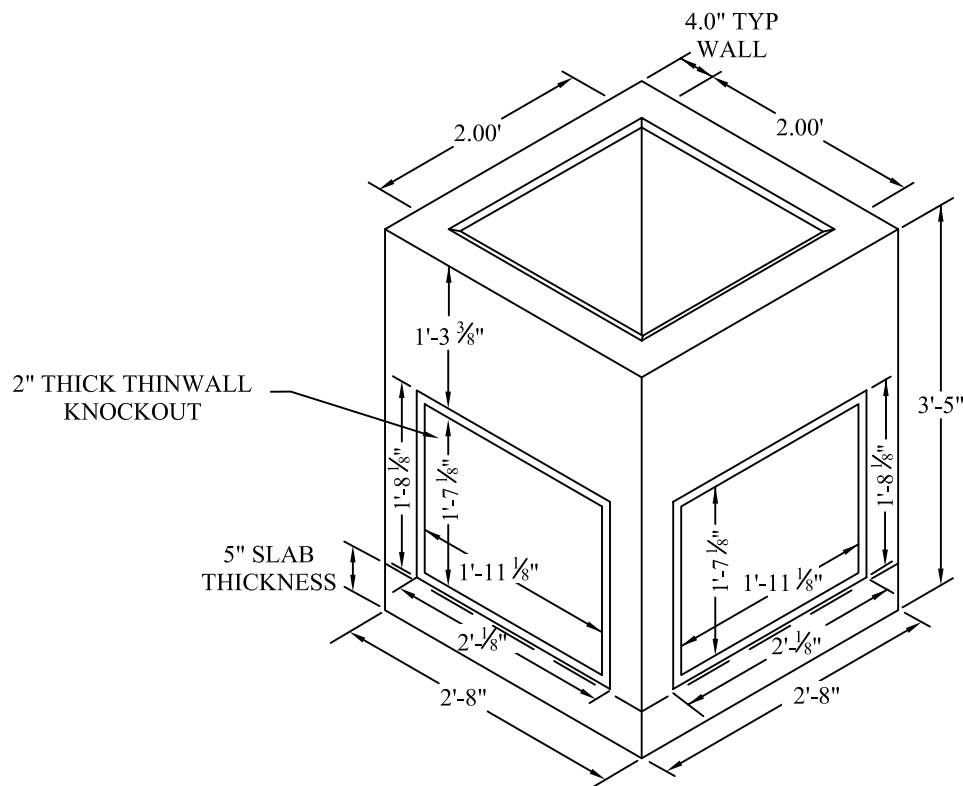
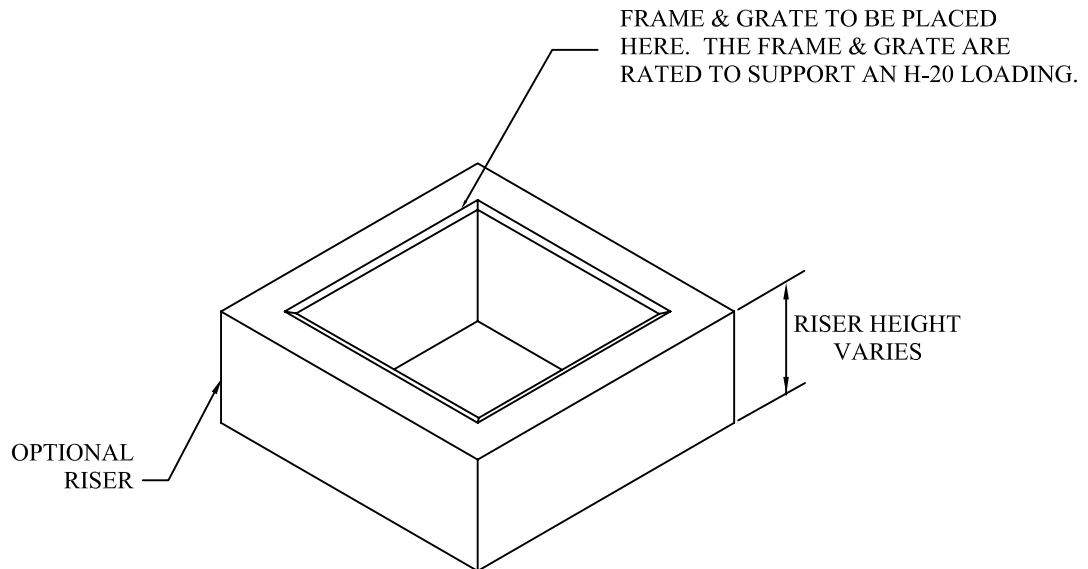
NOTES:

1. BOX WEIGHT = 2,175
2. VAULT DESIGNED TO MEET ASTM C-858 & C-913.
3. LIFTING ANCHOR TYPE AND PLACEMENT AS REQUIRED.

 GENEVA PIPE <small>Concrete products. concrete reliability.</small>	SHEET: 2' x 2' x 2' CATCH BASIN		
	SCALE: N.T.S.	DRAWN: RMP	
PROJECT:	DATE: 1-24-2013	TITAN #:	-
STANDARD DRAWING			
LOCATION: SALT LAKE - OREM - ST. GEORGE	Sheet 1		

2' x 2' x 3' CONCRETE CATCH BASIN OR CURB INLET

DESIGNED TO MEET ASTM C-858 & C-913



NOTES:

1. THE OVERALL WEIGHT OF THE BOX IS 1,635 LBS.
2. SEE ADDITIONAL SHEET FOR REINFORCEMENT DESIGN.



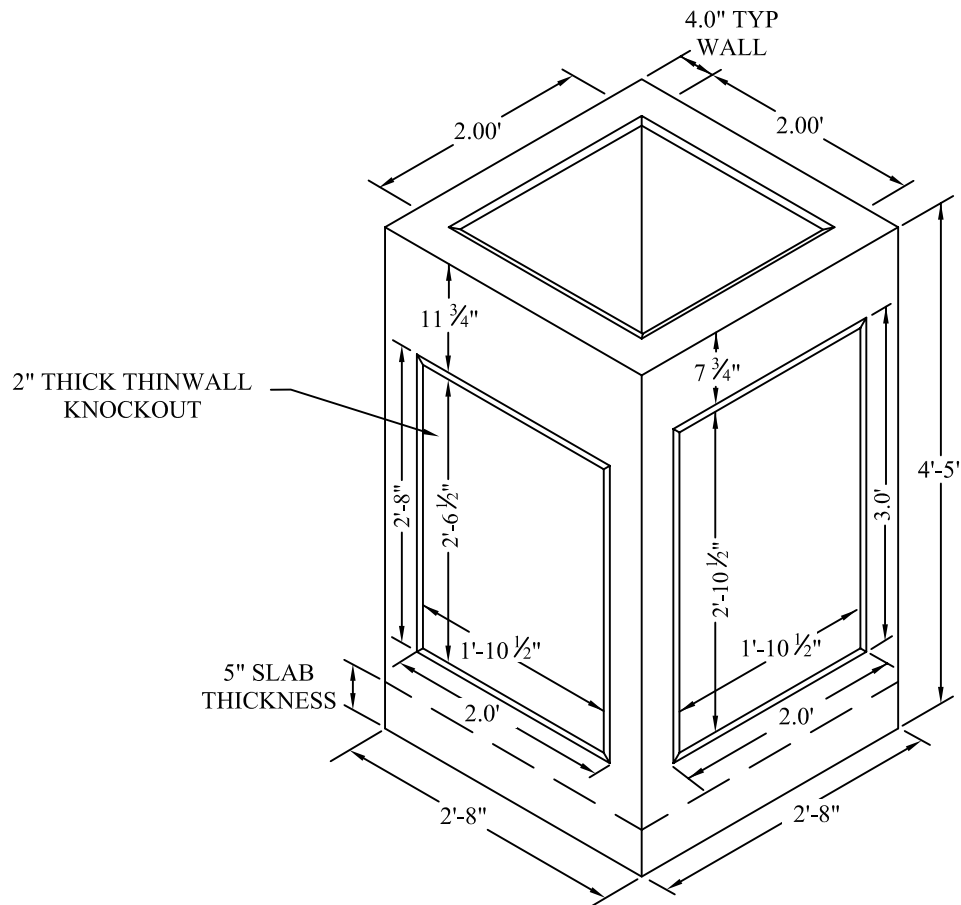
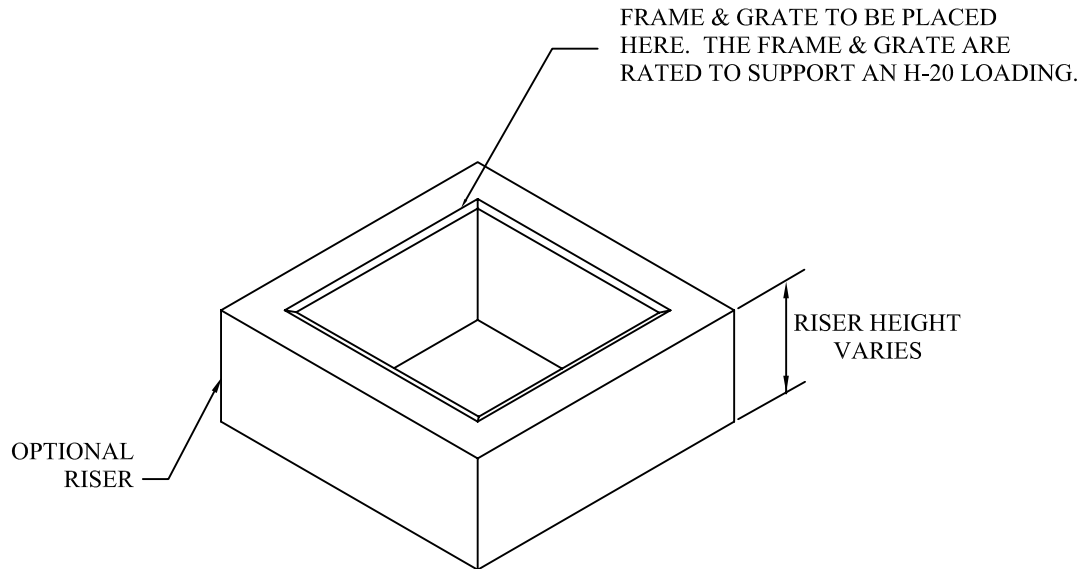
GENEVA PIPE

Concrete products, concrete reliability

Orem, Utah Phone: 801-225-2416
Moapa, Nevada Phone: 702-864-2620
Hurricane, Utah Phone: 435-635-9255

2' x 2' x 4' CONCRETE CATCH BASIN OR CURB INLET

DESIGNED TO MEET ASTM C-858 & C-913



NOTES:

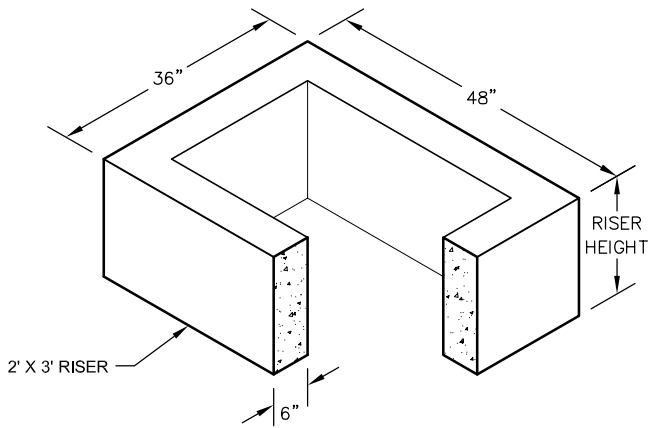
1. THE OVERALL WEIGHT OF THE BOX IS 1,865 LBS.
2. SEE ADDITIONAL SHEET FOR REINFORCEMENT DESIGN.



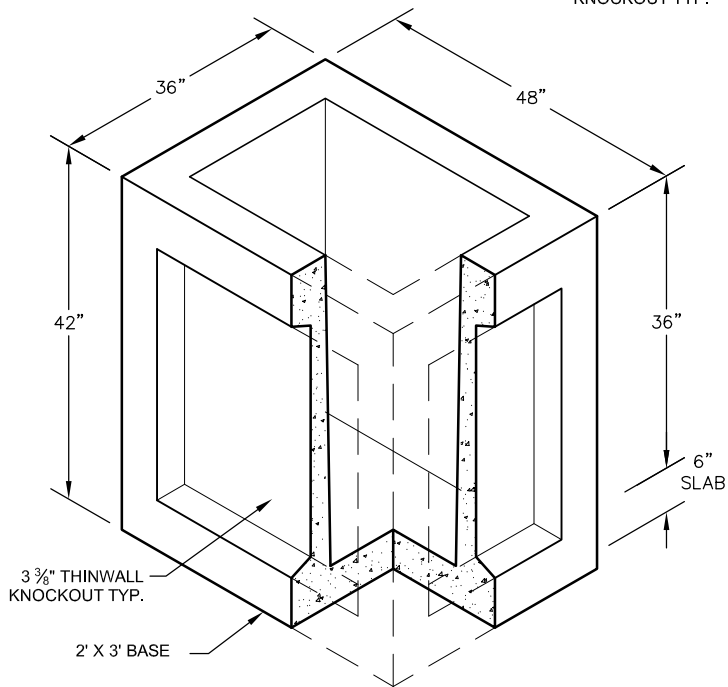
GENEVA PIPE

Concrete products, concrete reliability

Orem, Utah Phone: 801-225-2416
 Moapa, Nevada Phone: 702-864-2620
 Hurricane, Utah Phone: 435-635-9255



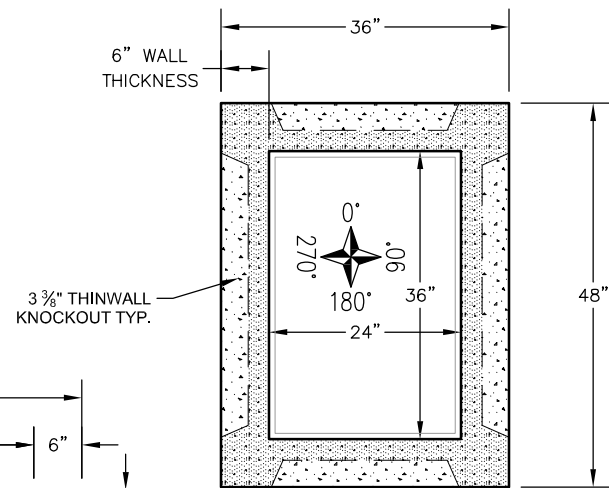
RISER ISOMETRIC VIEW



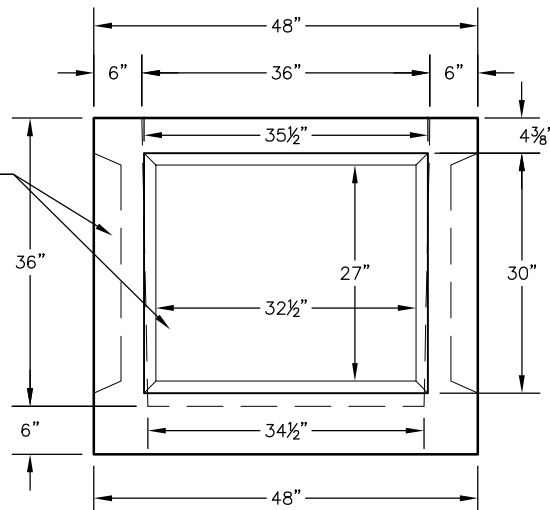
BASE ISOMETRIC VIEW

CATCH BASIN SPECIFICATIONS				
RISER HEIGHT AND WEIGHT				
6"	12"	18"	24"	
450 lb	900 lb	1,350 lb	1,800 lb	

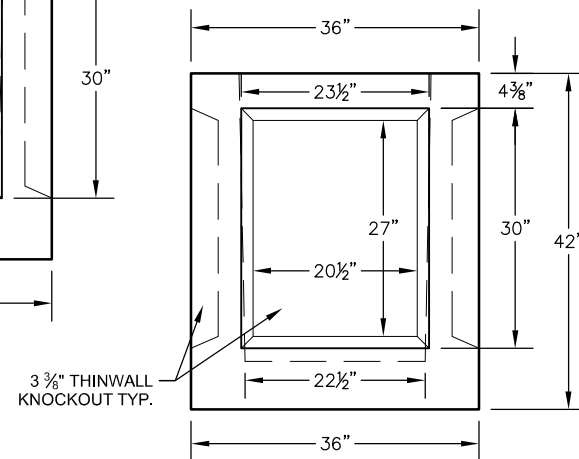
* CUSTOM RISER HEIGHTS AVAILABLE UPON REQUEST



TOP VIEW




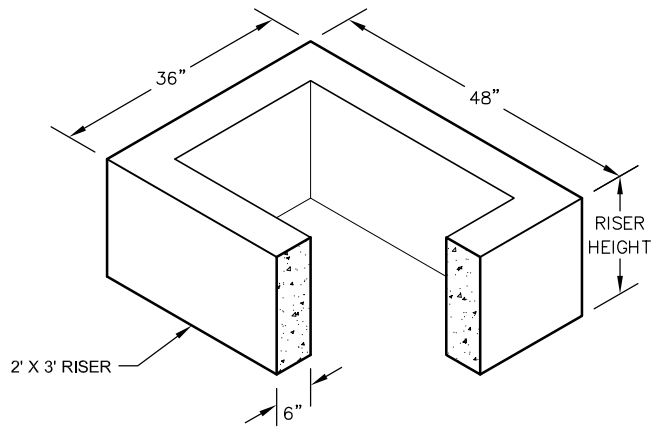
90° & 270° ELEVATION



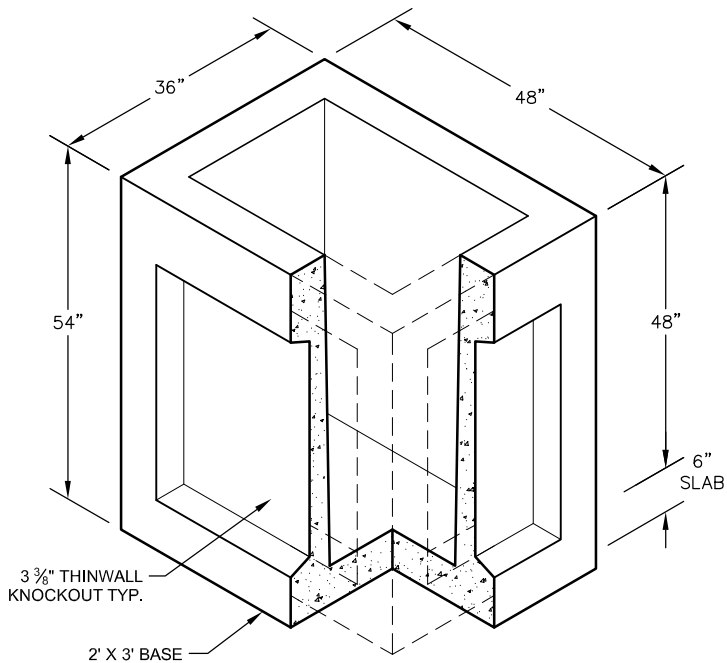
0° & 180° ELEVATION

- NOTES:**
1. BOX WEIGHT = 3,375 LBS
 2. VAULT DESIGNED TO MEET ASTM C-858 & C-913.
 3. LIFTING ANCHOR TYPE AND PLACEMENT AS REQUIRED.

 GENEVA PIPE <small>Concrete products. concrete reliability</small>	SHEET: 2' x 3' x 3' CATCH BASIN		
	SCALE: N.T.S.	DRAWN: RMP	
	DATE: 1-24-2013	TITAN #:	-
PROJECT: STANDARD DRAWING			
LOCATION: SALT LAKE - OREM - ST.GEORGE		Sheet 1	



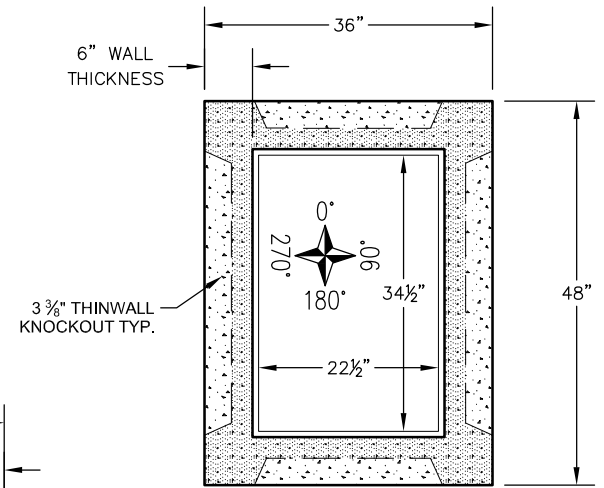
RISER ISOMETRIC VIEW



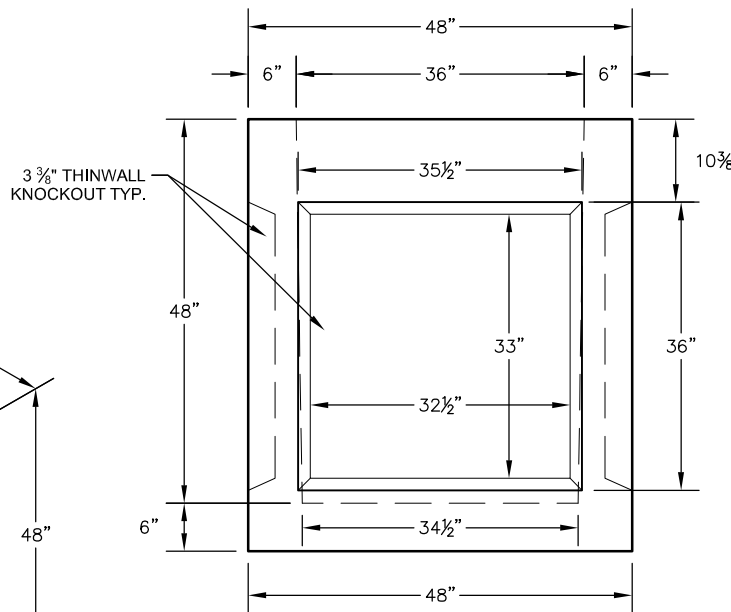
BASE ISOMETRIC VIEW

CATCH BASIN SPECIFICATIONS			
RISER HEIGHT AND WEIGHT			
6"	12"	18"	24"
450 lb	900 lb	1,350 lb	1,800 lb

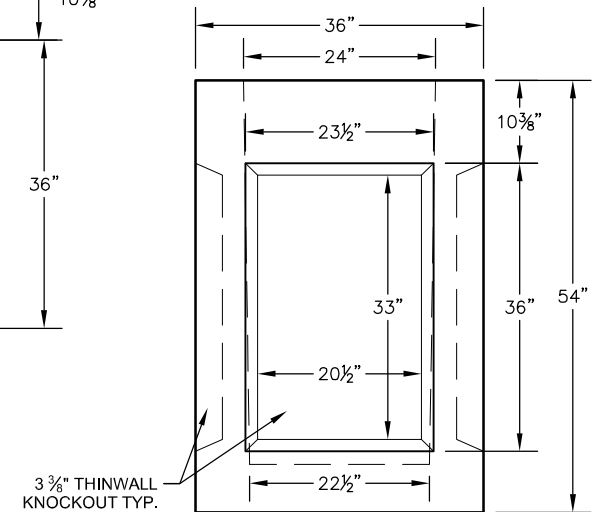
* CUSTOM RISER HEIGHTS AVAILABLE UPON REQUEST



TOP VIEW




90° & 270° ELEVATION

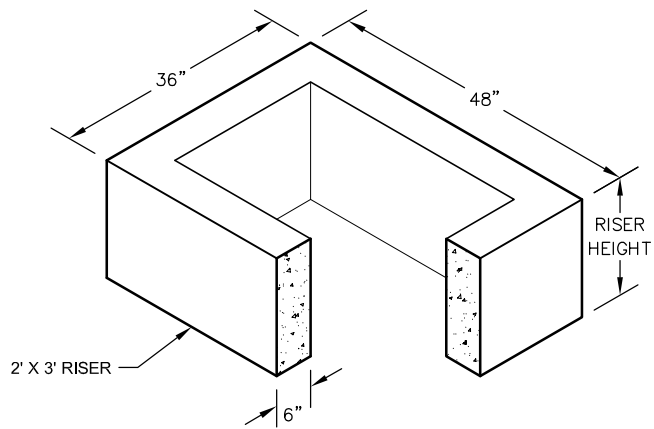


0° & 180° ELEVATION

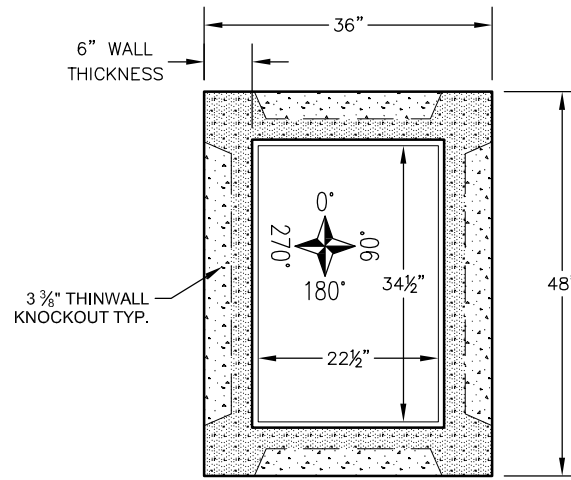
NOTES:

1. BOX WEIGHT = 4,275 LBS
2. VAULT DESIGNED TO MEET ASTM C-858 & C-913.
3. LIFTING ANCHOR TYPE AND PLACEMENT AS REQUIRED.

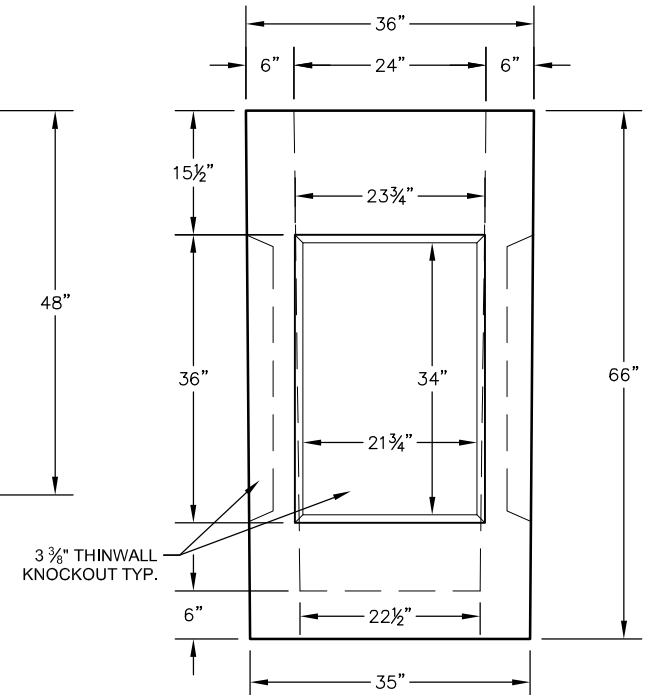
 GENEVA PIPE <small>Concrete products. concrete reliability.</small>	SHEET: 2' x 3' x 4' CATCH BASIN	
	SCALE: N.T.S.	DRAWN: RMP
PROJECT:	DATE: 1-24-2013	TITAN #: -
STANDARD DRAWING		
LOCATION: SALT LAKE - OREM - ST.GEORGE	Sheet 1	



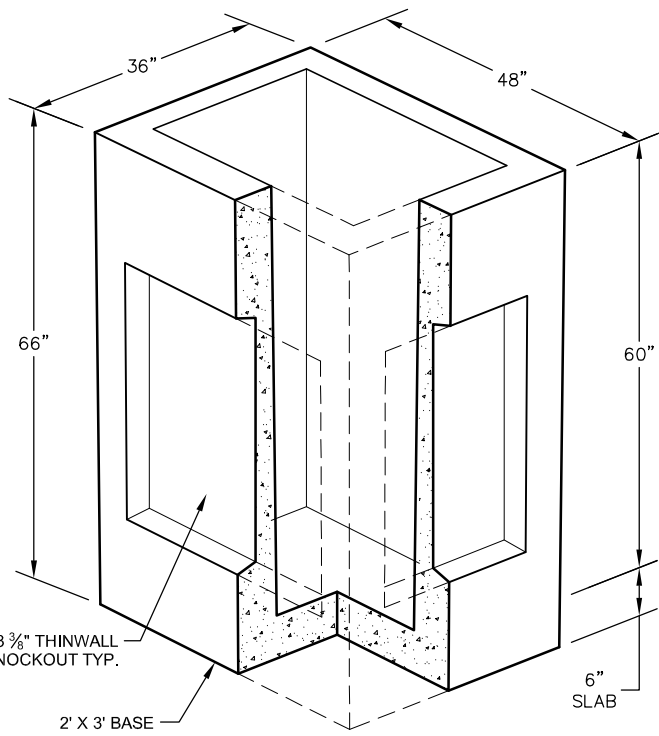
RISER ISOMETRIC VIEW



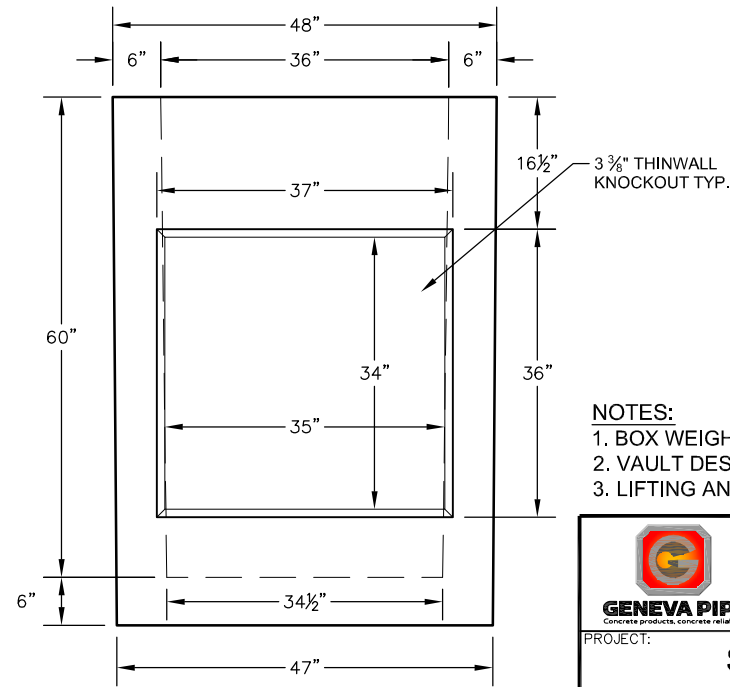
TOP VIEW



0° & 180° ELEVATION



BASE ISOMETRIC VIEW




90° & 270° ELEVATION

CATCH BASIN SPECIFICATIONS			
RISER HEIGHT AND WEIGHT			
6"	12"	18"	24"
450 lb	900 lb	1,350 lb	1,800 lb

* CUSTOM RISER HEIGHTS AVAILABLE UPON REQUEST

NOTES:

1. BOX WEIGHT = 5,175 LBS
2. VAULT DESIGNED TO MEET ASTM C-858 & C-913.
3. LIFTING ANCHOR TYPE AND PLACEMENT AS REQUIRED.

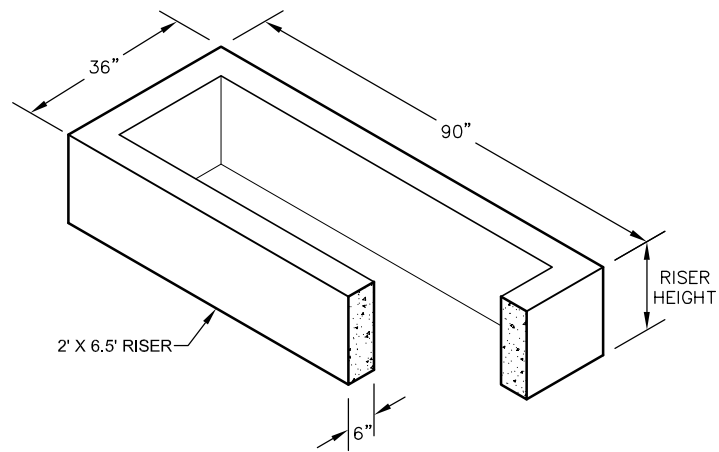
 GENEVA PIPE <small>Concrete products. concrete reliability</small>	SHEET: 2' x 3' x 5' CATCH BASIN		
	SCALE: N.T.S.	DRAWN: RMP	
PROJECT:	DATE: 1-24-2013	TITAN #:	-
STANDARD DRAWING			
LOCATION: SALT LAKE - OREM - ST.GEORGE			Sheet 1

CATCH BASIN SPECIFICATIONS

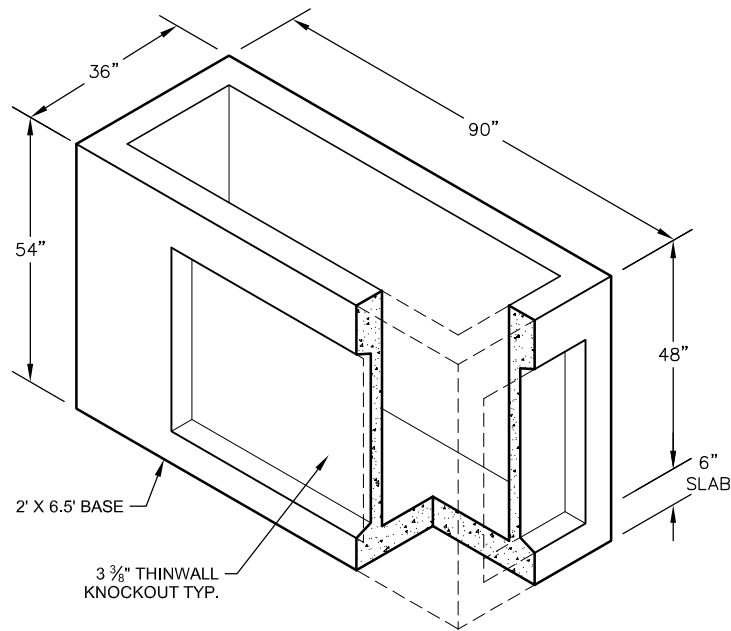
RISER HEIGHT AND WEIGHT

12"	18"	24"
1,425 lb	2,150 lb	2,850 lb

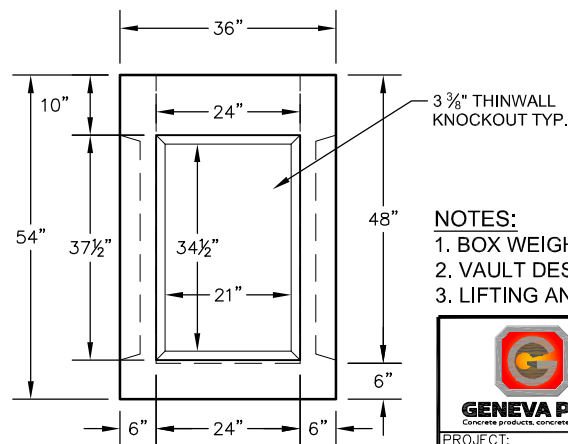
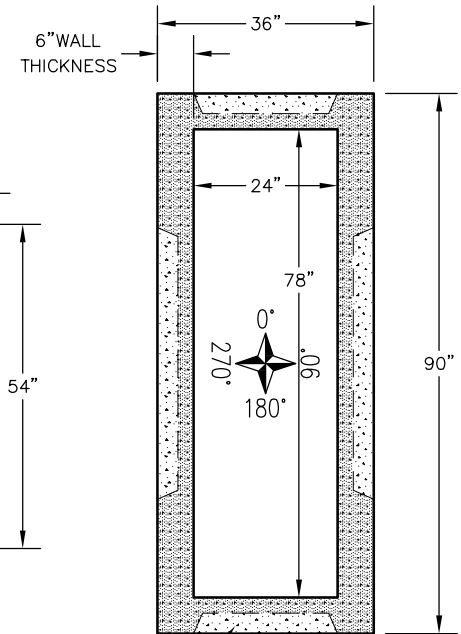
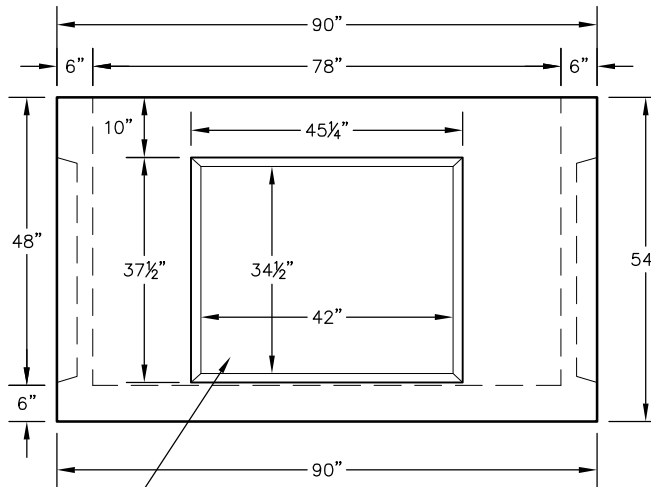
* CUSTOM RISER HEIGHTS
AVAILABLE UPON REQUEST



RISER ISOMETRIC VIEW




BASE ISOMETRIC VIEW

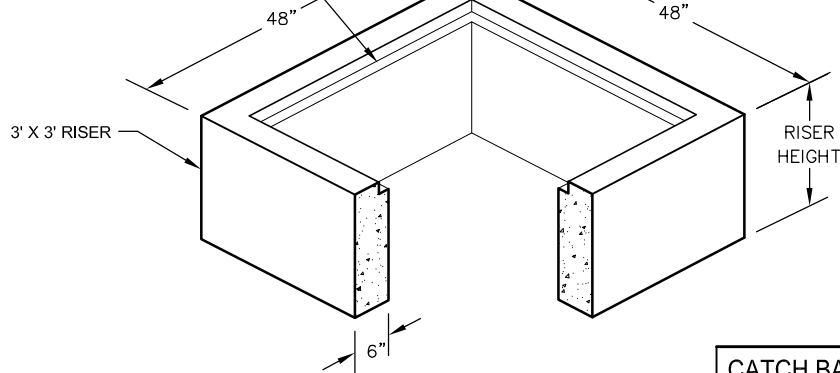


NOTES:

1. BOX WEIGHT = 6,100 LBS.
2. VAULT DESIGNED TO MEET ASTM C-858 & C-913.
3. LIFTING ANCHOR TYPE AND PLACEMENT AS REQUIRED.

 GENEVA PIPE <small>Concrete products. concrete reliability.</small>	SHEET: 2' x 6.5' x 4' CATCH BASIN		
	SCALE: N.T.S.	DRAWN: RMP	
PROJECT:	DATE: 1-24-2013	TITAN #:	-
STANDARD DRAWING			
LOCATION: SALT LAKE - OREM - ST. GEORGE	1 of 1		

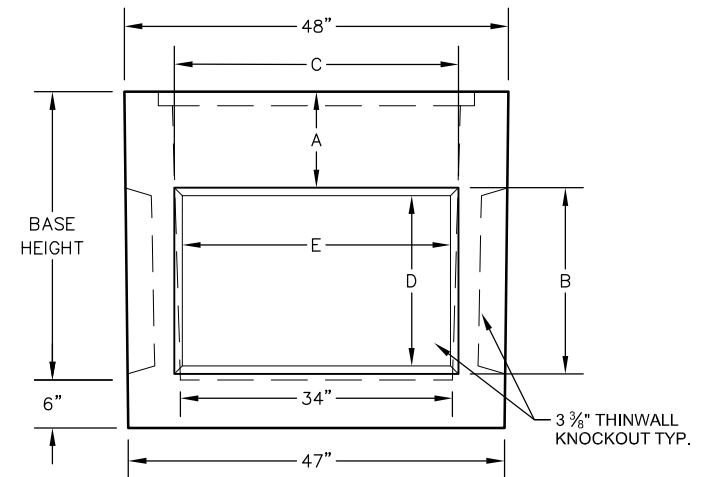
FRAME TO BE CAST INTO CONCRETE. THE FRAME AND GRATE ARE RATED TO SUPPORT AN H-20 LOADING



RISER ISOMETRIC VIEW

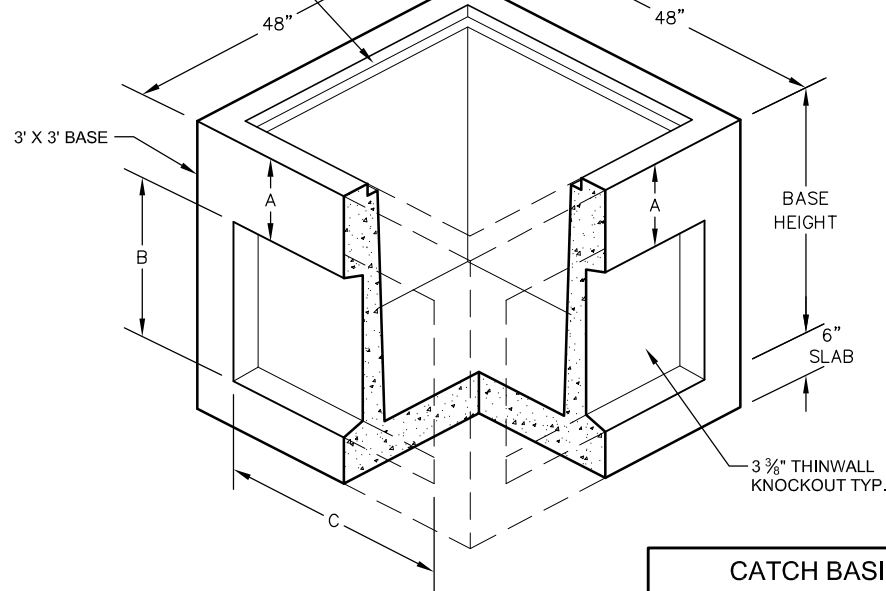
CATCH BASIN SPECIFICATIONS				
RISER HEIGHT AND WEIGHT				
6"	12"	18"	24"	
525 lb	1,050 lb	1,575 lb	2,100 lb	

* CUSTOM RISER HEIGHTS AVAILABLE UPON REQUEST



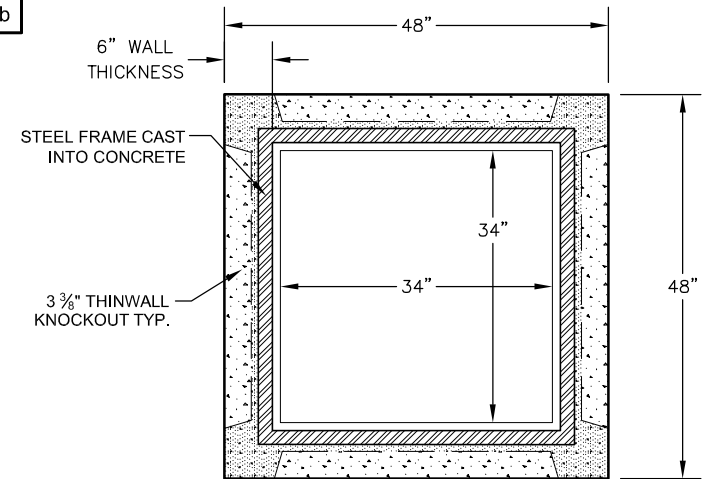
BASE ELEVATION (TYP 4 SIDES)

FRAME TO BE CAST INTO CONCRETE. THE FRAME AND GRATE ARE RATED TO SUPPORT AN H-20 LOADING



BASE ISOMETRIC VIEW


CATCH BASIN SPECIFICATIONS						
BASE HEIGHT	A	B	C	D	E	WEIGHT
3'	12"	23 1/4"	35 1/2"	21 1/4"	33 1/2"	3,800 lb
4'	12"	36"	35 1/2"	34"	33 1/2"	4,200 lb



TOP VIEW

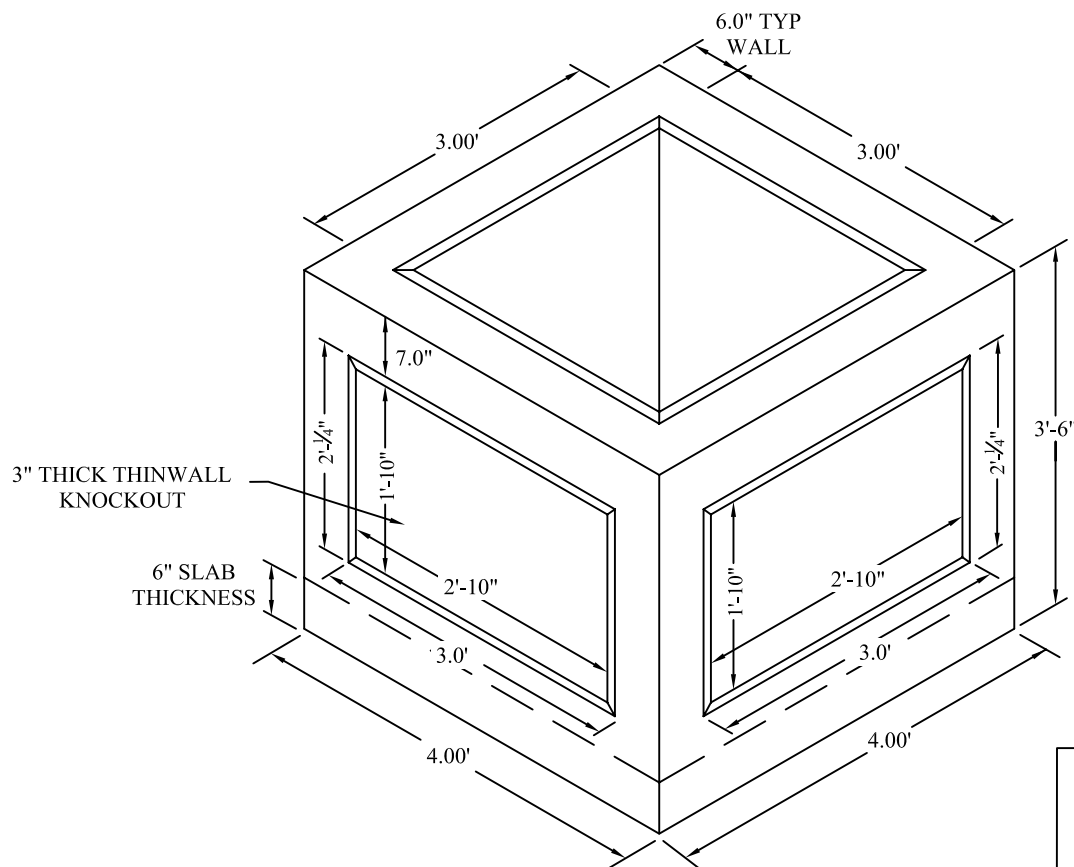
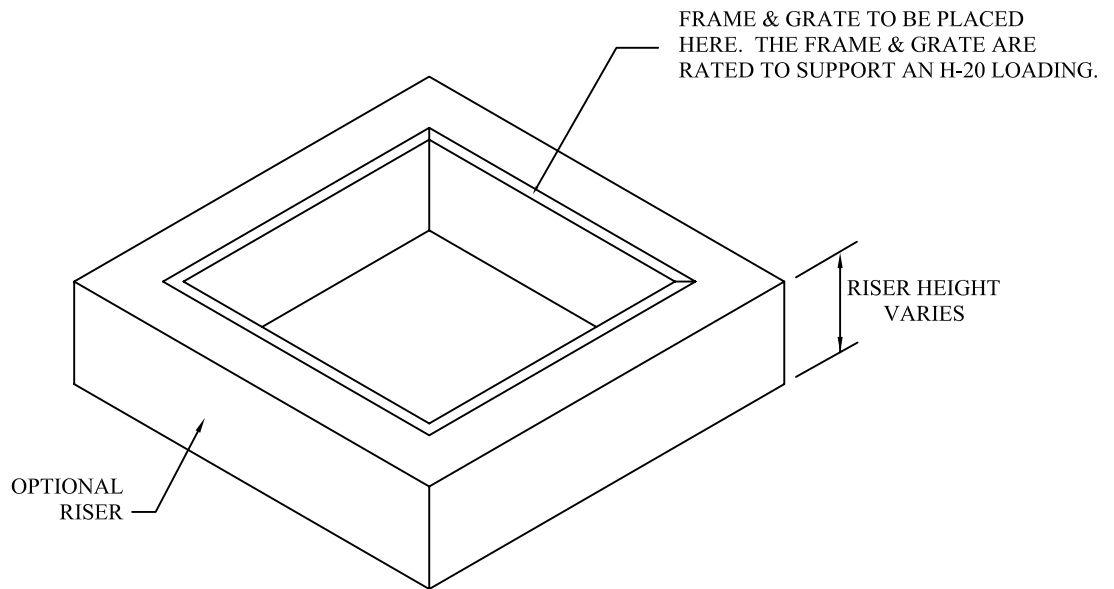
NOTES:

1. VAULT DESIGNED TO MEET ASTM C-858 & C-913.
2. LIFTING ANCHOR TYPE AND PLACEMENT AS REQUIRED.

 GENEVA PIPE <small>Concrete products. concrete reliability.</small>	SHEET: 3' x 3' CATCH BASIN		
	SCALE: N.T.S.	DRAWN: RMP	
PROJECT:	DATE: 1-24-2013	TITAN #:	-
STANDARD DRAWING			
LOCATION: SALT LAKE - OREM - ST. GEORGE	Sheet 1		

3' x 3' x 3' CONCRETE CATCH BASIN OR CURB INLET

DESIGNED TO MEET ASTM C-858 & C-913



NOTES:

1. THE OVERALL WEIGHT OF THE BOX IS 3,575 LBS.
2. SEE ADDITIONAL SHEET FOR REINFORCEMENT DESIGN.



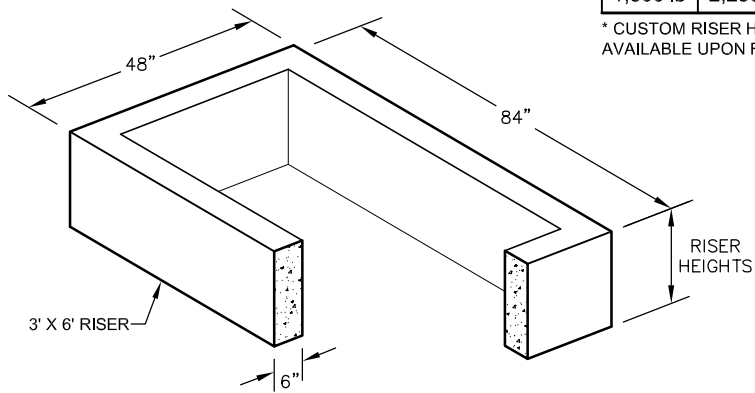
GENEVA PIPE

Concrete products, concrete reliability

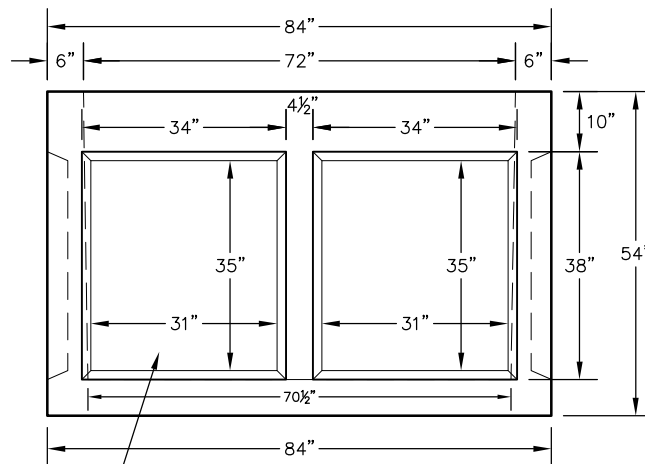
Orem, Utah Phone: 801-225-2416
 Moapa, Nevada Phone: 702-864-2620
 Hurricane, Utah Phone: 435-635-9255

CATCH BASIN SPECIFICATIONS		
RISER HEIGHT AND WEIGHT		
12"	18"	24"
1,500 lb	2,250 lb	3,000 lb

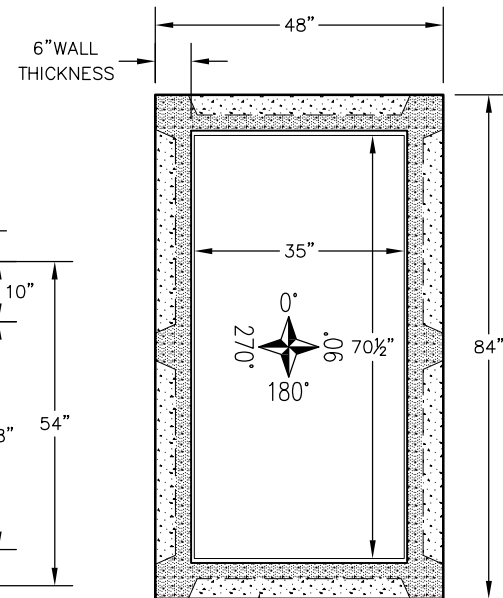
* CUSTOM RISER HEIGHTS
AVAILABLE UPON REQUEST



RISER ISOMETRIC VIEW

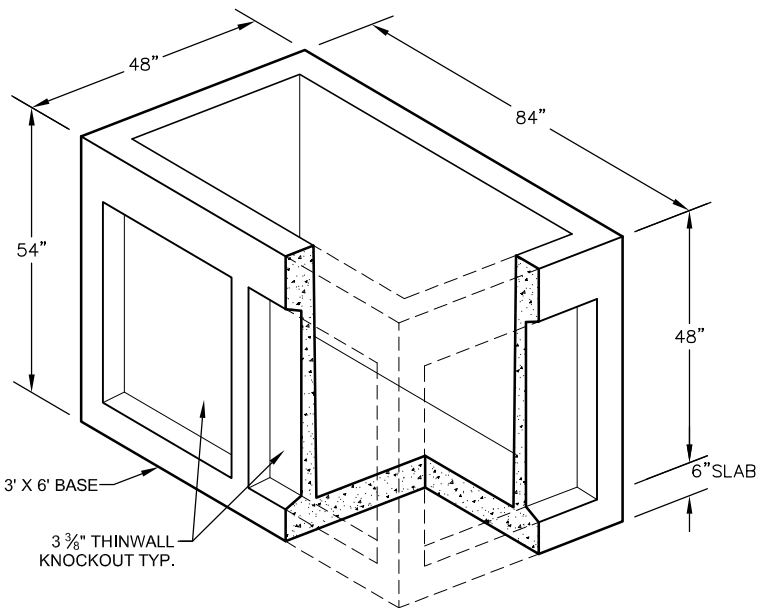


3 3/8" THINWALL KNOCKOUT TYP. **90° & 270° ELEVATION**

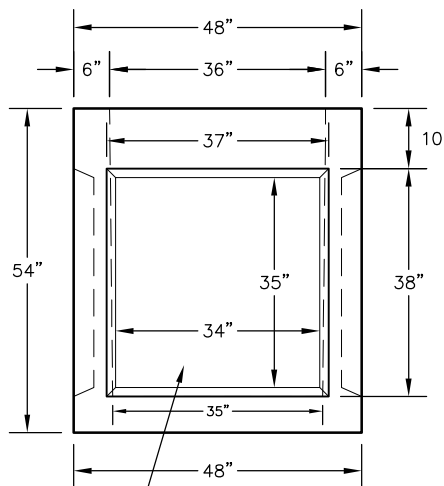


3 3/8" THINWALL KNOCKOUT TYP.

TOP VIEW



BASE ISOMETRIC VIEW




3 3/8" THINWALL KNOCKOUT TYP.

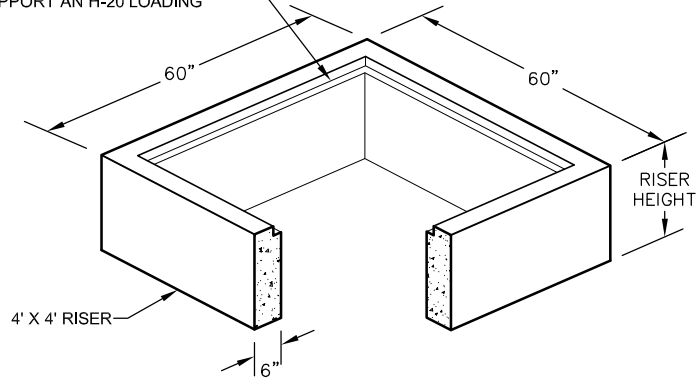
0° & 180° ELEVATION

NOTES:

1. BOX WEIGHT = 6,100 LBS.
2. VAULT DESIGNED TO MEET ASTM C-858 & C-913.
3. LIFTING ANCHOR TYPE AND PLACEMENT AS REQUIRED.

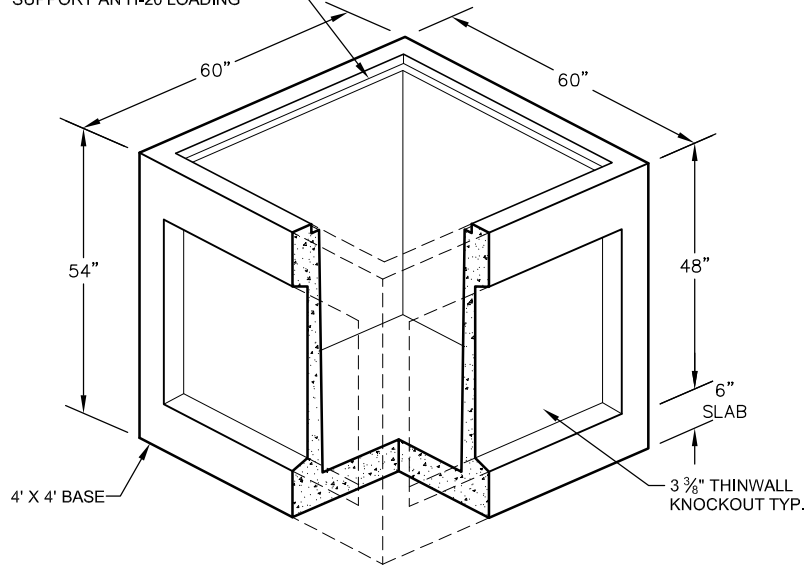
 GENEVA PIPE <small>Concrete products. concrete reliability.</small>	SHEET: 3' x 6' x 4' CATCH BASIN		
	SCALE: N.T.S.	DRAWN: RMP	
PROJECT:	DATE: 3-1-2013	TITAN #:	-
STANDARD DRAWING			
LOCATION: SALT LAKE - OREM - ST. GEORGE	1 of 1		

FRAME TO BE CAST INTO CONCRETE. THE FRAME AND GRATE ARE RATED TO SUPPORT AN H-20 LOADING



RISER ISOMETRIC VIEW

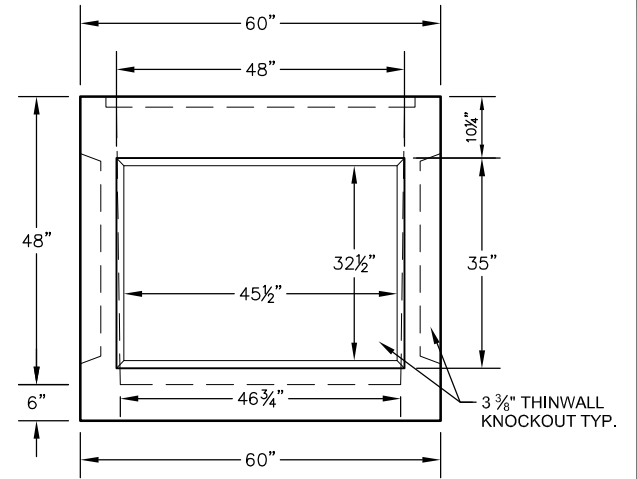
FRAME TO BE CAST INTO CONCRETE. THE FRAME AND GRATE ARE RATED TO SUPPORT AN H-20 LOADING



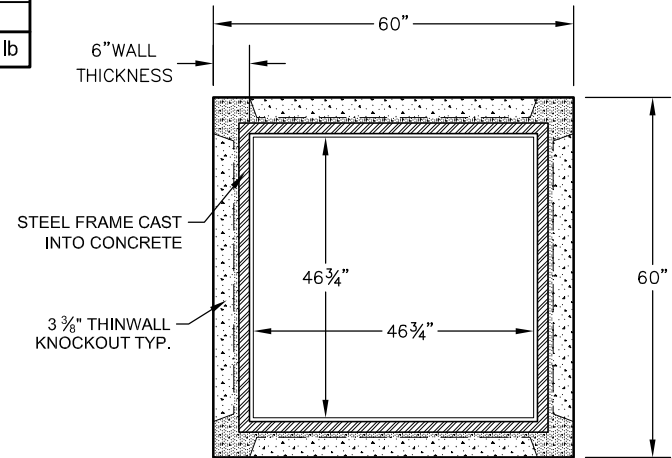
BASE ISOMETRIC VIEW

CATCH BASIN SPECIFICATIONS					
RISER HEIGHT AND WEIGHT					
12"	24"	36"	48"	60"	
1,350 lb	2,700 lb	4,050 lb	5,400 lb	6,750 lb	

* CUSTOM RISER HEIGHTS AVAILABLE UPON REQUEST




BASE ELEVATION (TYP 4 SIDES)

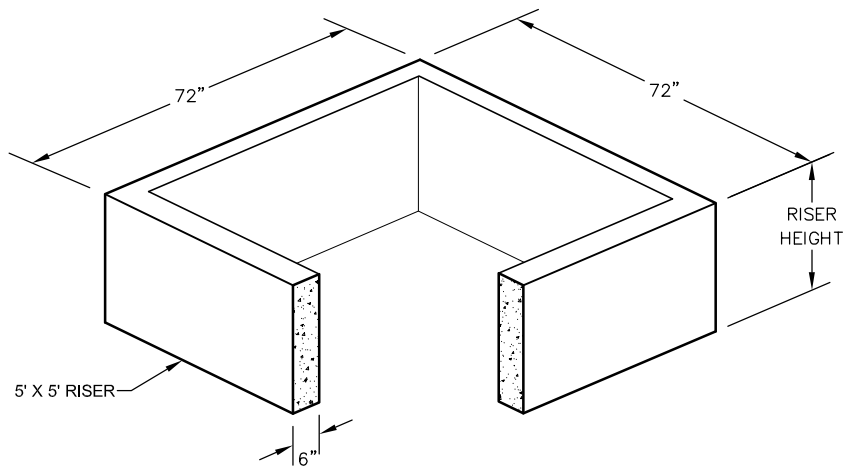


TOP VIEW

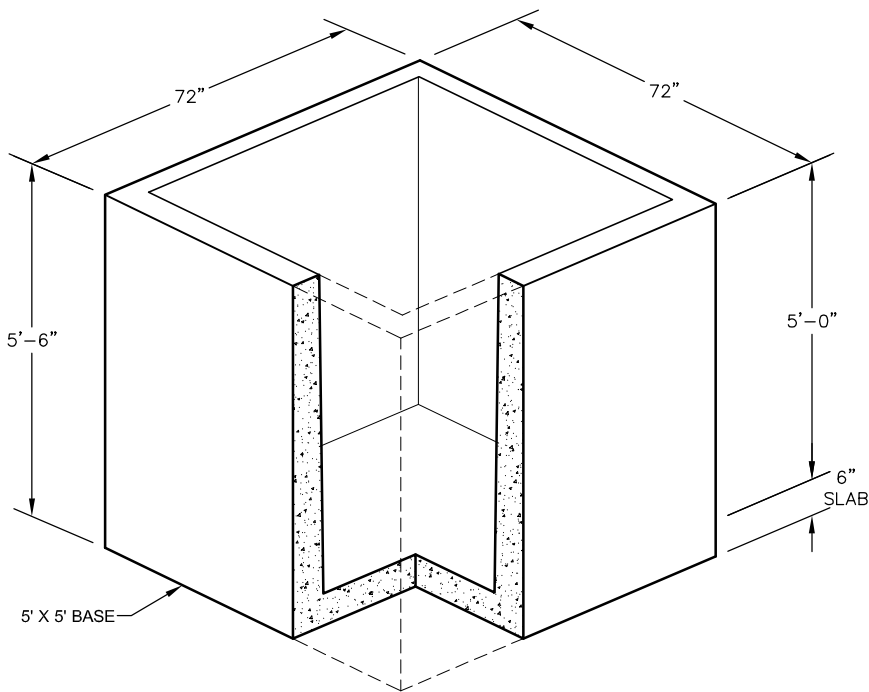
NOTES:

1. BOX WEIGHT = 5,525 LBS.
2. VAULT DESIGNED TO MEET ASTM C-858 & C-913.
3. LIFTING ANCHOR TYPE AND PLACEMENT AS REQUIRED.

 GENEVA PIPE <small>Concrete products. concrete reliability.</small>	SHEET: 4' x 4' CATCH BASIN		
	SCALE: N.T.S.	DRAWN: RMP	
PROJECT:	DATE: 1-24-2013	TITAN #:	-
STANDARD DRAWING			
LOCATION: SALT LAKE - OREM - ST. GEORGE	Sheet 1		



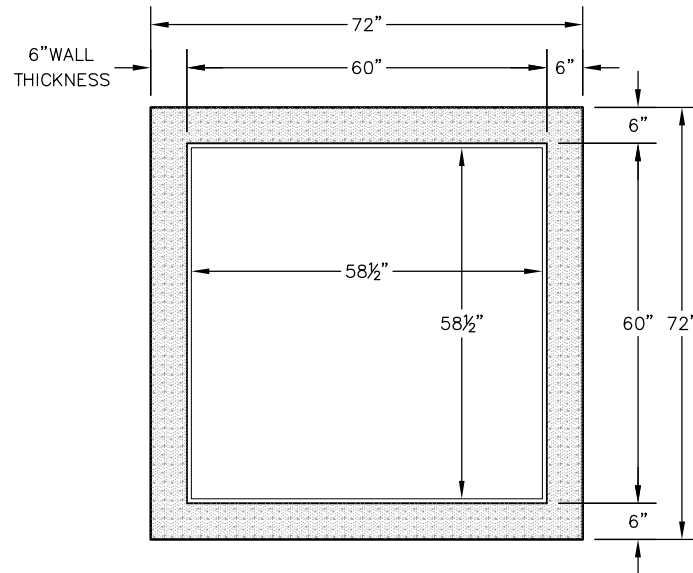
RISER ISOMETRIC VIEW



BASE ISOMETRIC VIEW

CATCH BASIN SPECIFICATIONS				
RISER HEIGHT AND WEIGHT				
12"	24"	36"	48"	60"
1,650 lb	3,300 lb	4,950 lb	6,600 lb	8,250 lb


* CUSTOM RISER HEIGHTS AVAILABLE UPON REQUEST



TOP VIEW

NOTES:

1. BOX WEIGHT = 11,000 LBS.
2. VAULT DESIGNED TO MEET ASTM C-858 & C-913.
3. LIFTING ANCHOR TYPE AND PLACEMENT AS REQUIRED.

 GENEVA PIPE <small>Concrete products. concrete reliability.</small>	SHEET: 5' x 5' CATCH BASIN	
	SCALE: N.T.S.	DRAWN: RMP
PROJECT:	DATE: 1-24-2013	TITAN #: -
STANDARD DRAWING		
LOCATION: SALT LAKE - OREM - ST. GEORGE	Sheet 1	